

TABLE OF CONTENTS



Company Details

- Our Mission and Vision
- Metalex in Brief
- Company Information
- Scope of Capabilities



HSE & Quality Management System

- Environmental Management System Policy
- HSE Policy
- Quality Management System Manual
- Health safety Environment Manual



Certificates

- Chamber of Commerce Registration Certificate
- Turkish Energy Market Board Registration Certificate
- DIN EN ISO 9001:2000 Certificates



Company Experience

- Completed Projects
- Refinery & Plant Projects
- Acoustic Emission References



Human Resources

- Management Bios
- Organization Chart



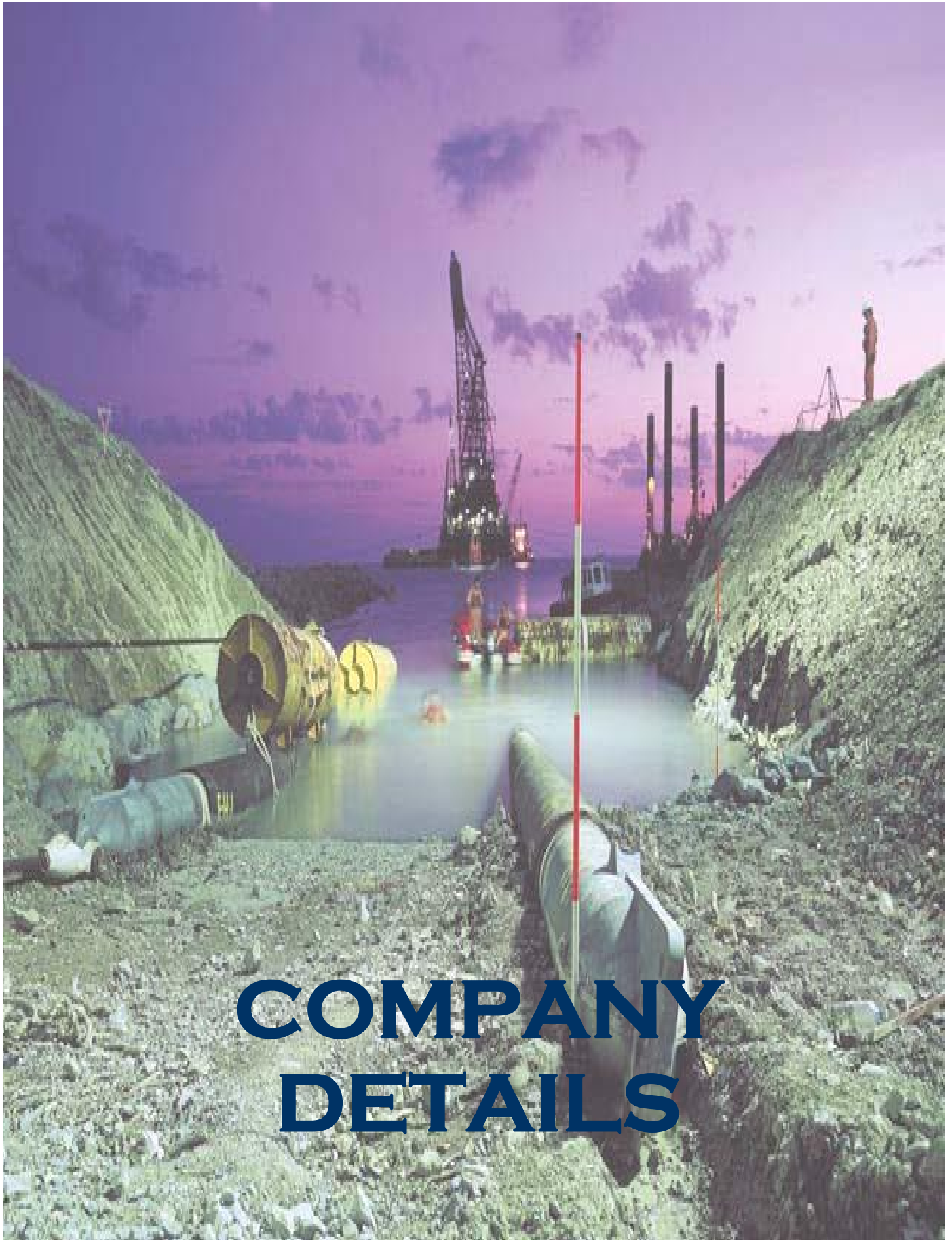
Machinery & Equipment

- List of Machinery & Equipment Owned by the Company
- Head Office Computer Network



Metalex Engineering & Design Group

- Engineering – Piping / Mechanical
- Engineering – Civil / Structural
- 3-D Plant Design
- Power Plants
- Natural Gas
- Refineries
- Petro-Chemical Plants
- Team
- Software Technology



COMPANY DETAILS

OUR MISSION

We exist to;

materialize projects requiring advanced technology and specialization,

create benefits for our employees, our company and end users,

provide the satisfaction of our customers in maximum level,

in design, engineering, procurement & supply, construction, testing and commissioning jobs of pipeline, oil & gas facility and infrastructure construction projects in energy sector and various industries.

OUR VISION

Metalex is a company, which

produces its own technical specifications and technology in world energy sector,

is accepted by all over the world with its success in design and application processes,

contains the most advanced techniques and technologies in working areas,

aims continuous development,

is dynamic and provides integrity with its employees.

Metalex holds ISO 9001-2000, ISO 14001 & OHSAS 18001 certificates and operates as per requirements in these certifications.

• **INTRODUCTION**

SCOPE OF ACTIVITIES FOR METALEX GROUP can be mainly classified into four groups:

- 1. GENERAL CONSTRUCTION*
- 2. PIPELINES & OIL AND GAS FACILITIES*
- 3. INTERNATIONAL TRADING*
- 4. RENEWABLE ENERGY SYSTEMS*

About CONSTRUCTIONS & PIPELINES; the capabilities of Metalex as a General Contractor covers nearly all phases of general civil construction, oil & gas pipeline, refinery and facility constructions and design and construction of industrial plants. Our target market is the Middle East, North African and Eastern European countries. The capabilities and strength of Metalex is detailed in the following sections of this company profile.

Metalex, as a turn-key contractor, aims to become your dependable business solution partner for all projects covering our scope from project development to all phases of execution. More detailed information can be received from the attached "METALEX GROUP's Corporate Profile".

About INT'L TRADING; we mainly work on Crude Oil and Oil Products such as Diesel D2, Kerosene JP54, Fuel Oil, Bitumen, etc. Through our reliable and very influential associates in Russia; we are able to supply any kind of product from that region and from its neighborhoods with very advantageous conditions.

And about RENEWABLE ENERGY SYSTEMS; METALEX, under the full responsibility of saving earth, currently improves the Clean Energy Systems aggressively. And this responsibility became a company policy such as "protect the environment to save the future".

Company Information

Head Office

Contact: Aydın YURDAYAR, B. Sc. Mechanical Engineer
Address: Güzeltepe Mahallesi, Ahmet Mithat Efendi Caddesi,
Başak Apt. No: 33 06690
ÇANKAYA – Ankara -TURKEY

Metalex NefteGaz Russia

Contact: ISAUL Maxim Konstantinovich
Address: Marshala Ribalkov Street, Building 2,
Floor 6, Suite 314, 123060 Moscow,
Russian Federation

MetalexRus Russia

Contact: EREMIAH Sergei Alexandrovich
Address: 2 Donskey Passage, Building 10,
Office 511, 119071 Moscow,
Russian Federation

Metalex Kuwait

Address: P.O. Box 7178 South Tank Farm Area,
Ahmadi, KUWAIT

Company Information (continued)

Metalex Saudi Arabia

Address: Dhahran Str. Al Ghutmi Building 2nd Fl. No 1/2
Alkhobar, SAUDI ARABIA

Metalex Oman

Address: PO Box 993, Postal Code 310, Bawshar,
Muscat, Sultanate Of Oman

Metalex Yemen

Address: PO Box 19897, Diplomatic Area,
Sanaa, Republic Of Yemen

Metalex International Trading S.A.L., Lebanon

Contact: Mr. Aziz Olcay, M. Sc. Civil Engineer, C.E.O.
Address: Central Beirut District, Marfaa 157,
Floor 1, Beirut, Lebanon

Company Information (continued)

Metalex Romania s.r.l.

Contact: Mr. Gabriel popescu, Civil Engineer

Address: Boulevard Unirii No: 20, Building 5/C,
Sc. 1, Et. 7, Apt. 51, Sector 4,
Bucharest, Romania

Canada Branch Office

Contact: Mr. Halil Bulubay, M. Sc. Electrical Engineer

Address: 5214 Manor Street, Burnaby BC V5G 1B7,
Vancouver, Canada

The SCOPE OF ACTIVITIES can be classified into 4 MAIN GROUPS

CONSTRUCTIONS



PIPELINES



*RENEWABLE
ENERGY SYSTEMS*



*INTERNATIONAL
TRADING*

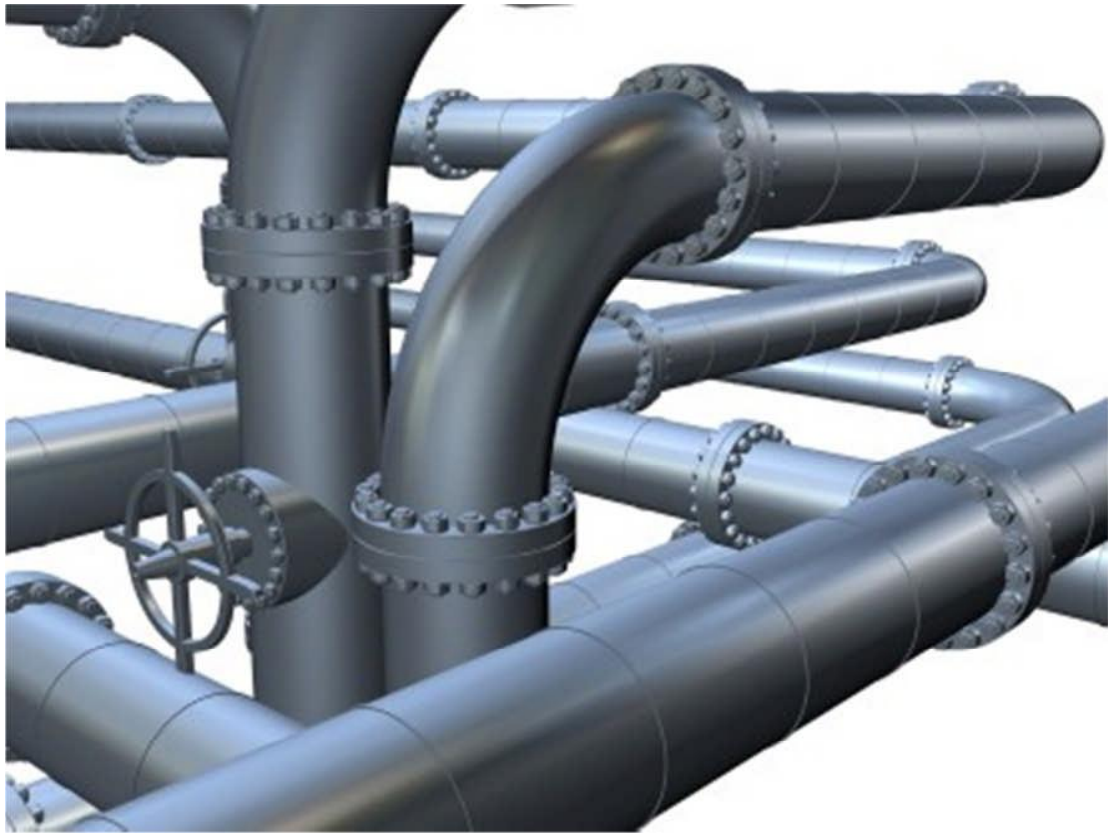


- **PIPELINES**

Metalex Construction and Trading Company L.L.C. has ultimate background in engineering, design and field application aspects in Pipeline Projects.

METALEX !!

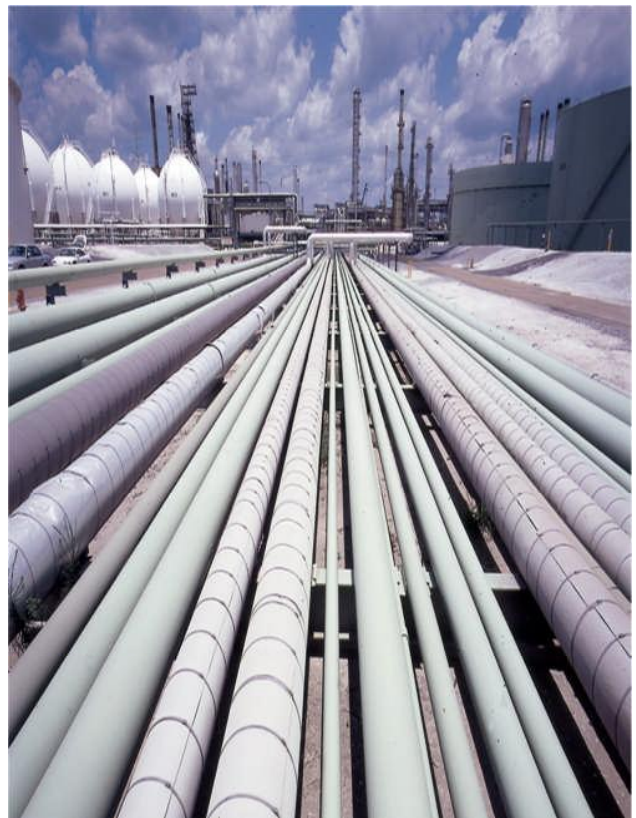
expert in



Pipeline Management



In backyard of Metalex, there are well experienced staffs, together with the reliability and self-confidence of Metalex Group, to handle Oil, Gas and Water Pipeline Projects including Pressure Reduction, Valve and Compressor units; Pump Stations; Storage and Filling facilities; Cylindrical, Atmospheric and Spherical Storage Tanks; and Refinery Units.

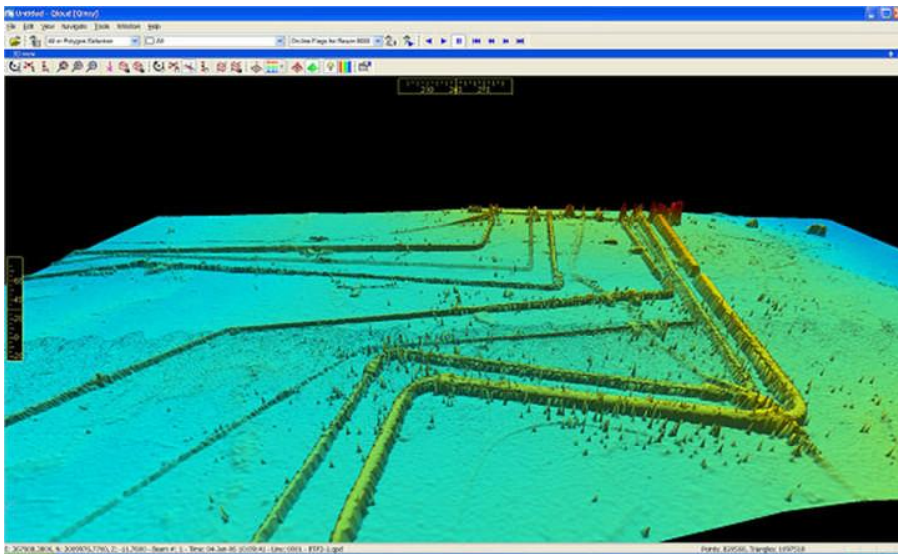
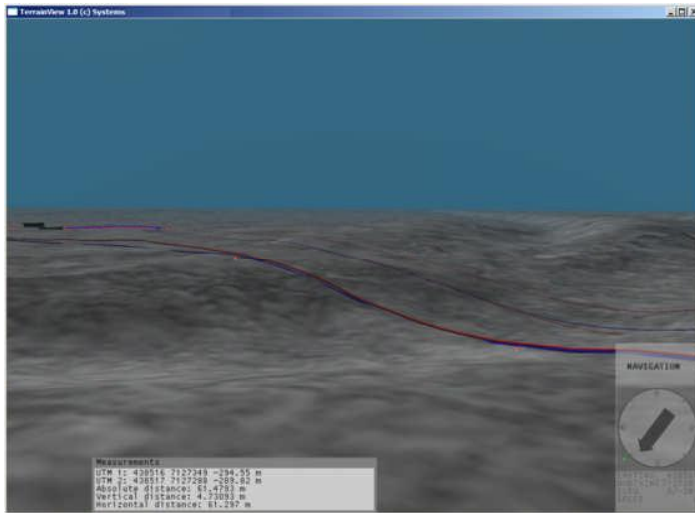


The handles processes in pipeline projects can be defined as:

✓ **Procurement**



✓ **Survey works with GPS techniques and computer based applications**

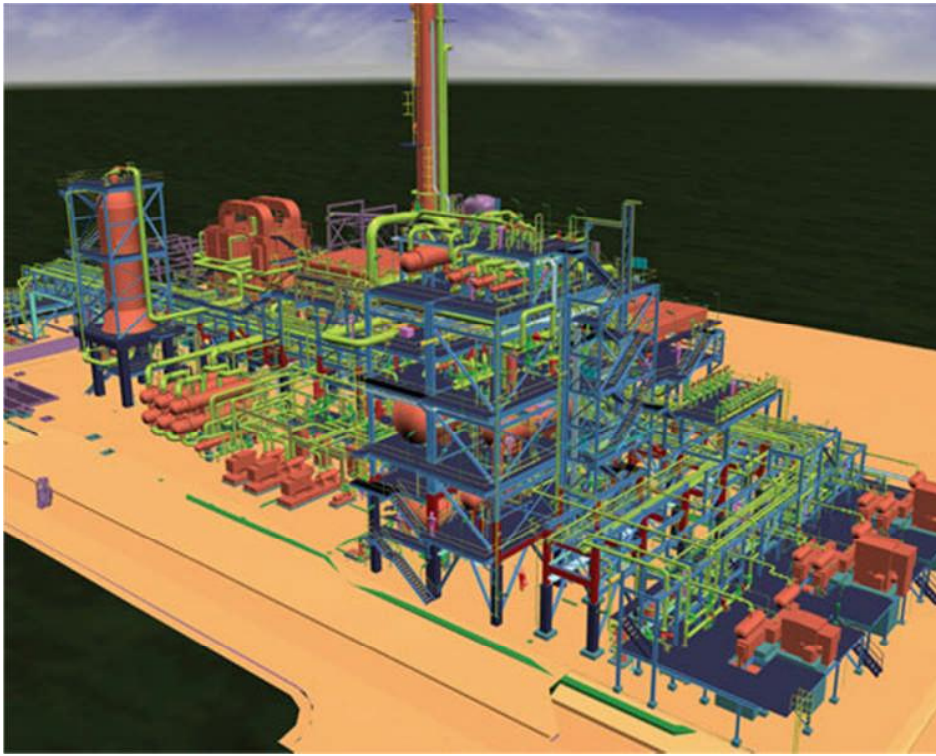


✓ *Field Preparations*



✓ *Case studies & 3D Design for Plants and Pipelines*





✓ *Pipeline Applications: Bending, Installation, Welding, Insulation & Testing*





✓ *Plant Applications: Refinery and Facilities, Storage Tanks*

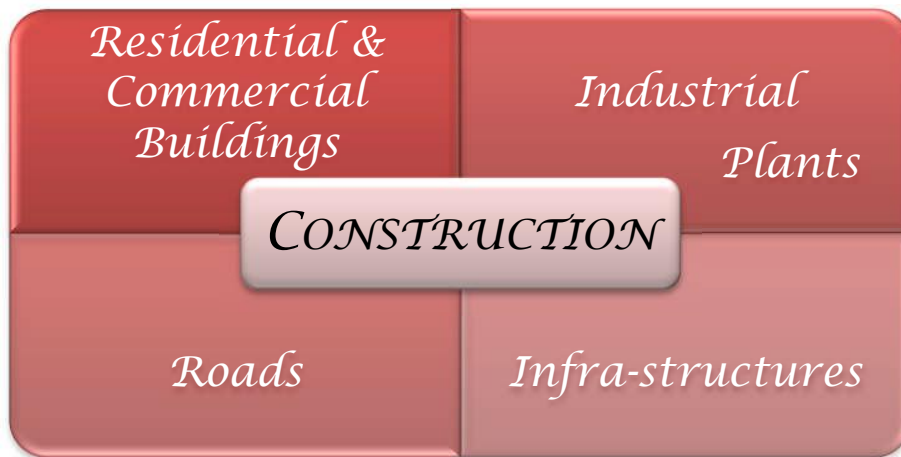




- **CONSTRUCTION**

Although, it seems that Metalex Construction and Trading Company L.L.C., as a company itself has no enough experience; being a member of METALEX GROUP makes this company reliable and very experienced in engineering, design and field applications to complete big construction projects with maximum quality within an estimated time in several locations.

Construction Projects mainly can be grouped as:



Metalex, respects the environment and occupants in design and construction processes to meet certain objectives such as protecting occupant health; improving employee productivity; using energy, water, and other resources more efficiently; and reducing the overall impact to the environment.

To show this respect; Metalex always prefers to apply “SUSTAINABLE CONSTRUCTION

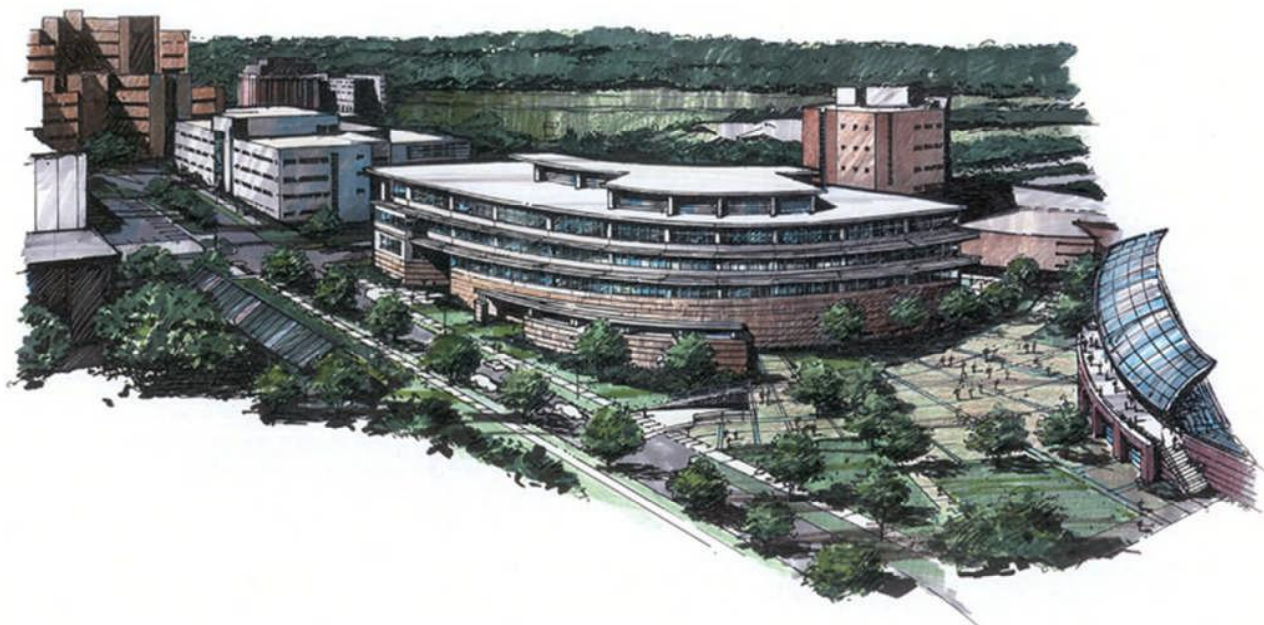


SYSTEMS”

which makes the entire project designed, built, renovated, operated, or reused in an ecological and resource-efficient manner.

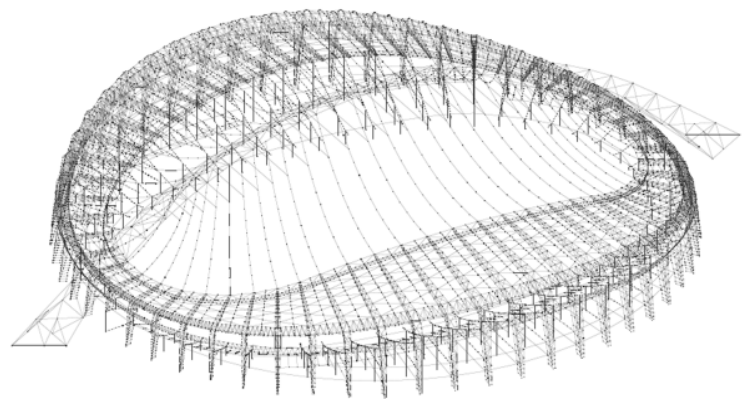
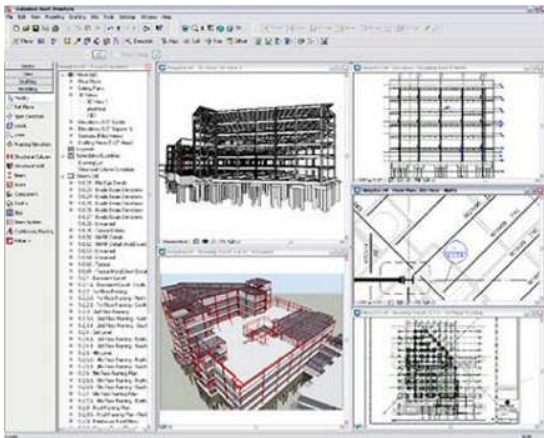
Metalex handles the following processes by its experienced technical staff;

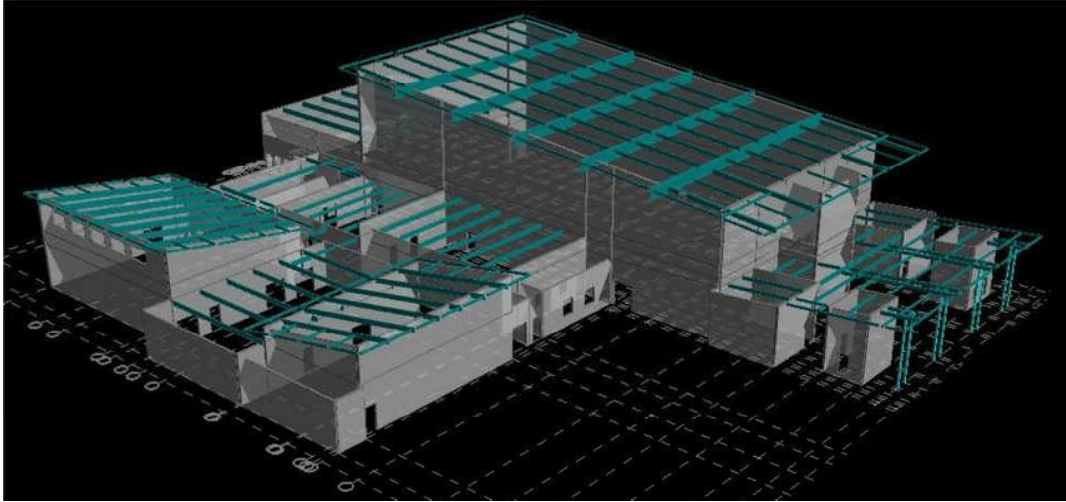
- ✓ *Architectural Design*





✓ *Structural Design*





✓ *Mechanical -Electrical Design*



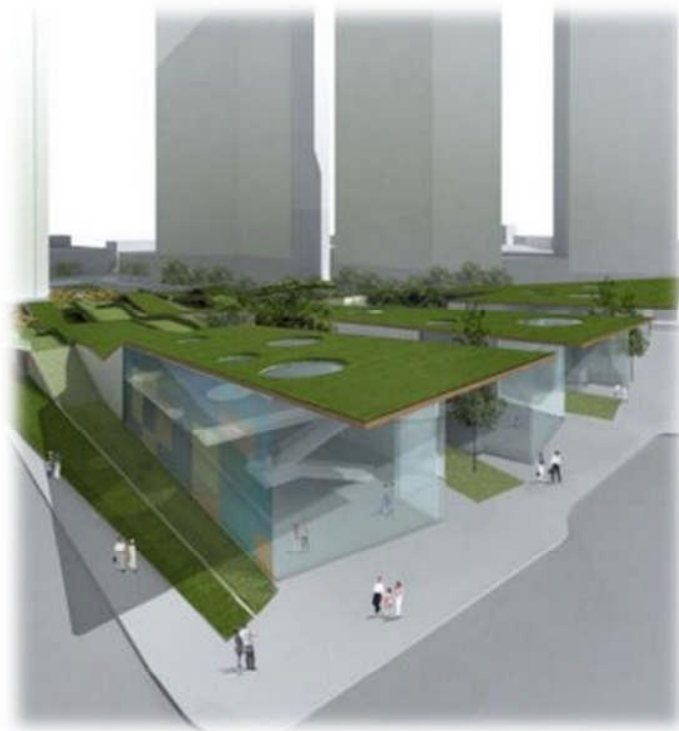
✓ *Construction Phase (site applications)*



✓ *Interior Design*



✓ *Landscaping (Design & Applications)*



• **INTERNATIONAL TRADING**

METALEX Construction and Trading Company L.L.C. is also dealing with Commodity Trading, through reliable and influential associates mainly in Russia, during many years. We have a high capability to supply all products from that region and from neighborhoods, mainly Crude Oil and Oil Products.

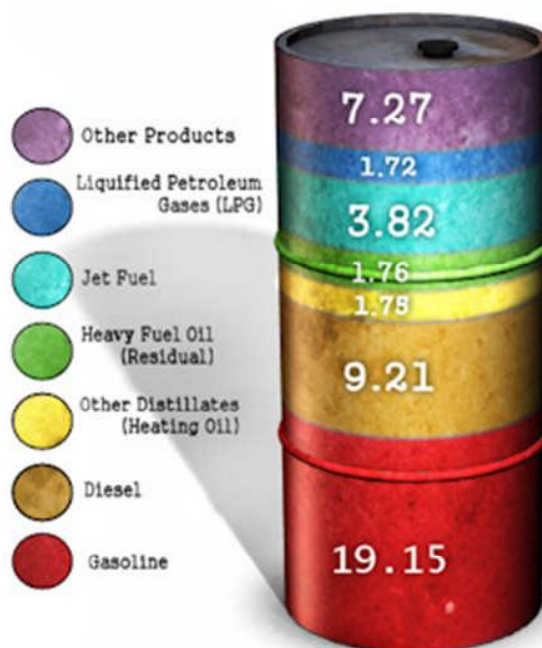
We have very good contacts and associations with many Refineries/Producer Companies not only in Russia but also in many countries in world. Also, we have good relations and very successful business with many buyers (Major Buyers and Traders) in world.

*We, as METALEX, are well-experienced in supplying **CRUDE OIL & REFINED PRODUCTS**; and in delivering those products under either **FOB** or **CFR ASWP** conditions.*

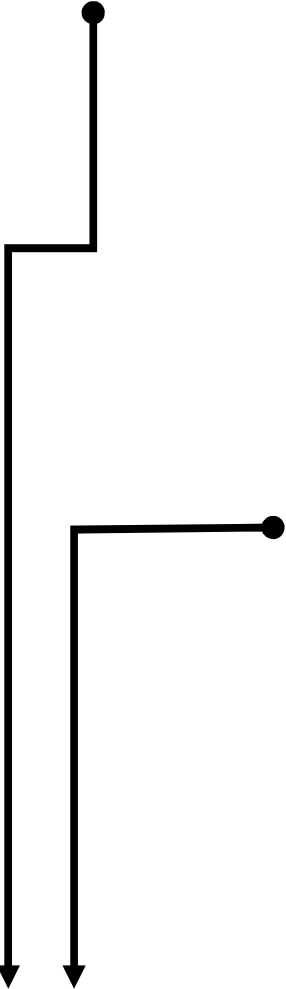
*We supply the products either as **SPOT DEALS** or as **YEARLY CONTRACTS** at Buyer's option. Also at Buyer's option; deliveries are made either **FOB** at loading ports or **CFR** at any safe world port by the shipping agencies whom we work with, under our responsibility.*

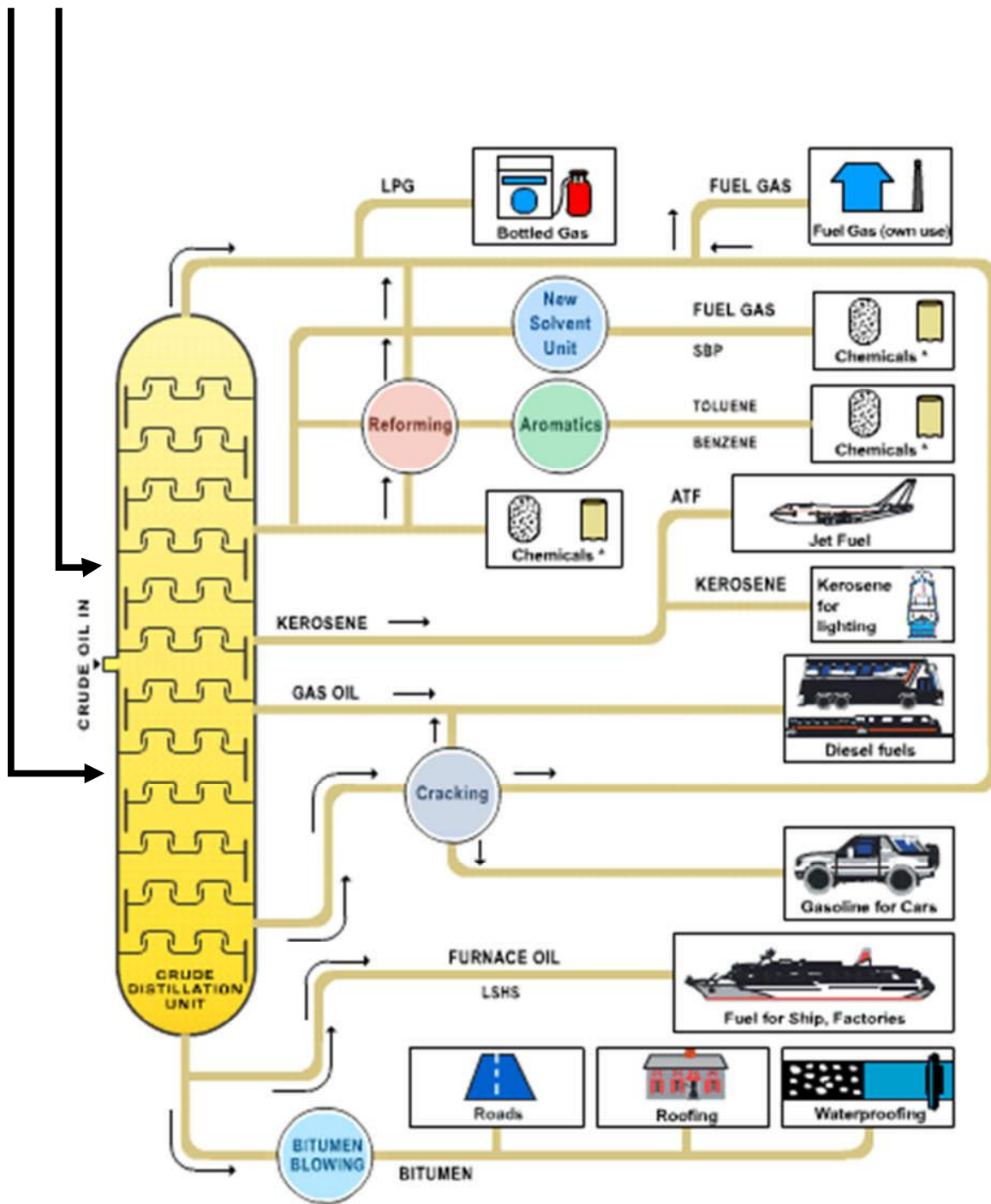
We make this business by using our own financial capabilities. We do not ask buyers to issue transferable letter of credit. We, as an Int'l Trader, purchase the products from refineries and sell to End Users.

By refining of one barrel of Crude Oil, we can say that we gain the refined products as shown below.



CRUDE OIL: Supply - Refining - Delivery Processes





* Products made outside the Refinery



As METALEX Construction and Trading Company L.L.C., we also supply products others than Oil Products, such as;

COAL



SULPHUR

UREA N-46%



- **RENEWABLE ENERGY SYSTEMS**

As it is well known; Renewable Energy is the energy comes from natural resources such as sunlight, wind, rain, tides and geothermal heat which are renewable (naturally replenished).

Main forms of renewable energy are:

1. *Wind Power*
2. *Hydropower*
3. *Solar Energy*
4. *Geothermal Energy*
5. *Biofuels*

*METALEX Construction and Trading Company L.L.C. respects earth and humanity in every step of its business scale; therefore already involved with **Clean Energy Systems**.*



We, as METALEX, are currently in a process of supplying Clean Energy by using Solar Energy and Wind Power in different countries.



METALEX, under the full responsibility of saving earth, currently improves the Clean Energy Systems aggressively; not only for Residential Purposes but also for Industrial Usages, especially. And very soon, Metalex will push the START button of a huge and very important INDUSTRIAL PROJECT which is definitely VITAL for the environment, earth and life.

HSE & QUALITY MANAGEMENT SYSTEM



Environmental Management System Policy

We obey all laws and arrangements related with environment and we seek continuous improvement, not only in our country also in countries where we work.

While we execute our activities, we determine our effects to the environment and if the negative effects exist, we do our best to minimize them.

While we execute our activities, we use the energy and other resources effectively and we take precautions for continuous saving.

We take our wastes under control, we minimize the pollution of the soil, water and air with the convenient techniques.

We make necessary announcements and apply training program to make our employees aware of the environment consciousness.

We announce the effects of our services to the environment to public opinion and we share our knowledge with them.



Aydın YURDAYAR

Chairman & CEO

April 18, 2001

METALEX POLICY STATEMENT FOR HEALTH AND SAFETY

Safety is as important as other business activities of Metalex.

Accidents and injuries are unacceptable.

The main objective of Safety Regulations is to avoid human suffering from injuries and damage to properties and all these regulations are to be compiled with in a strict manner.

Where necessary third party certificates will be obtained from the competent bodies declared in that field.

Safety is the line management responsibility in broad sense but principally, the responsibility for Safety lies with each individual employee, from management down to assistant of each employee.

We shall give the necessary care for both safety and work procedures in order to achieve our target of **ZERO LOST TIME INCIDENTS** by promoting personnel safety awareness, safety training and mitigation of unsafe work practices through our Safety and Line Management personnel.

We shall conduct our activities in a manner that ensures the health and safety of our staff, our sub-contractor employees and other persons whom our activities effect.

We shall ensure the protection and the safe operation of all plant and equipment.

We shall protect the environment and wherever possible return the surroundings to their natural state.

We shall comply fully with all laws and statues of the Country of Operations and in areas specific to oil and gas operations, impose more stringent standards and procedures where applicable.

We shall similarly comply with the regulations of our clients.

In Overall Management we shall comply with OHSAS 18001 Occupational Health and Safety System.

It is our ultimate objective that all Metalex staff does everything possible to prevent accidents before it happens thereby creating a safe environment in which to work.

This H.S.E. Policy also applies to all sub-contract personnel of Metalex.



Aydn YURDAYAR

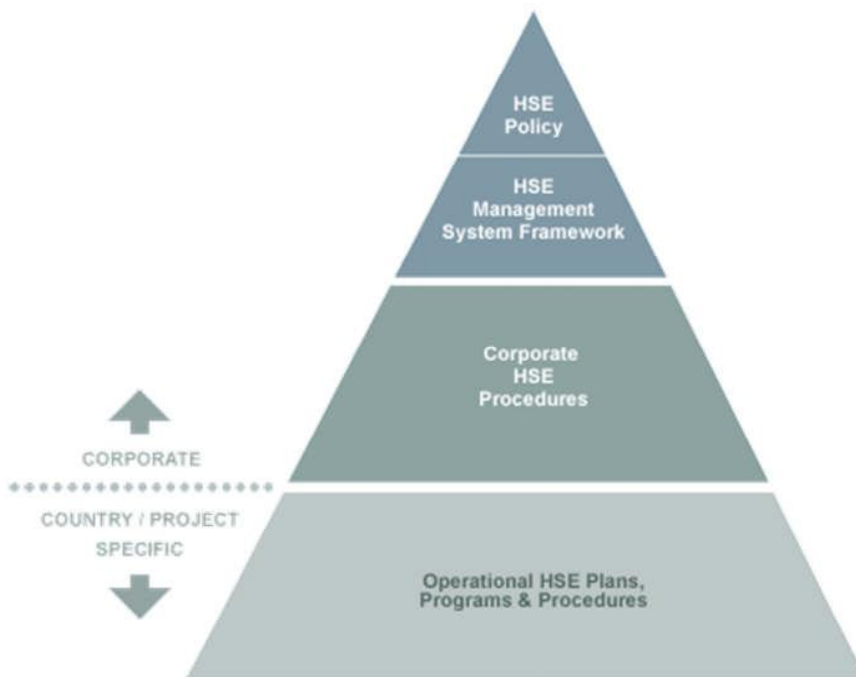
Chairman & CEO

April 18, 2001

- **HEALTH - SAFETY - ENVIRONMENT**

- ✓ **Guiding Principle**

Metalex is committed to maintaining high standards of safety, security, health, and environmental care. We comply with all applicable laws and regulations, and we apply responsible standards. Our goal is to drive injuries, illnesses, and operational incidents with environmental impact to zero. To help reach that goal, Metalex has active technology programs to support safety, security, health, and environmental initiatives, including both internal and external work by leading int'l consultants. We believe a company's commitment to achieving superior performance in safety, health, and the environment are closely tied to outstanding performance in all other aspects of operations. We have shown that we can complete projects that are essential to society while protecting the health and safety of people and safeguarding the environment.



We employ a disciplined, systematic approach to provide a robust framework for managing safety, security, health, and environmental risks. It is used in our projects enables us to measure progress and ensure management accountability for results in those areas.

✓ **RISK MANAGEMENT**

Risks are inherent in the energy and construction businesses, including risks associated with safety, security, health, and the environment. Metalex recognizes these risks and takes a systematic approach to reducing them. Providing energy to the growing world safely and in an environmentally responsible manner is a responsibility we take very seriously.



The same rigor and discipline that underpin our production program are also used in our approach to the management of our performance in safety, security, health, and the environment. We place great emphasis on planning and preparedness to ensure a quick and effective response to incidents. We have also developed plans for our response to an influenza pandemic and are currently implementing preparations globally which enable systematic identification, analysis, and control of potential causes of illness in our facilities.

✓ **SAFETY AND HEALTH**

*At Metalex, safety and health in the workplace is a top priority. Based on careful analysis of incidents and risks, we are continuously working to improve the safety and health of our employees and occupants, as we strive for a workplace where **Nobody Gets Hurt**.*



Metalex maintains an active commitment to the communities in which we work, and we believe that improvement in public health is a key enabler for broader economic and social gains. This program includes workplace education, access to community-based counseling and testing, and access to equitable care through the company-sponsored health plans and programs.

✓ **ENVIRONMENT**

Metalex is committed to achieving excellent environmental performance in each of our businesses to “Protect Tomorrow” Today.



We operate responsibly wherever we do business by implementing scientifically sound, practical solutions that consider environmental imperatives and the economic needs of the communities in which we operate. The company has a straightforward framework to guide our environmental practices. In addition to the consistent systematic approaches and careful adherence to all applicable laws and regulations, business lines are expected to:

- § *Deliver superior environmental performance, which will lead to competitive advantage;*
- § *Continually improve performance and drive incidents with environmental impact to zero; and,*
- § *Achieve industry leadership in key environmental performance areas.*

Our “Environmental Business Planning” contained within applied approaches is used by our businesses to update environmental targets and improvement plans, and to integrate them into business strategies and plans. Metalex incorporates efficiency improvements, emissions reductions, and considerations of environmental impacts into the routine operation of our business, as well as into the design of new facilities.

• **QUALITY MANAGEMENT**





CERTIFICATES

CERTIFICATE



UKS ULUSLARARASI
KALİTE SİSTEMLERİ VE
BELGELENDİRME
LTD. ŞTİ.

certifies according to TUV CERT Procedures that

Metalex Uluslararası İnşaat Grup Ticaret A.Ş.

Güzeltepe Mah., Ahmet Mithat Efendi Cad.,
No: 33/6 06690 Çankaya,
Ankara, TÜRKİYE

owns and operates a Quality Management System per

TS EN ISO 9001:2015

for the following scope of activities

ENGINEERING, DESIGN, PROCUREMENT, CONSTRUCTION, TESTING,
COMMISSIONING AND OPERATING OF NATURAL GAS, CRUDE OIL, WATER AND
PRODUCT PIPELINES, CRUDE OIL REFINERY UNITS, CENTRAL PROCESSING
FACILITIES, FIXED AND FLOATING ROOF CYLINDRICAL AND SPHERICAL TANKS,
TERMINAL AND STORAGE FACILITIES, FLOW LINES, GATHERING LINES, UPSTREAM
SURFACE FACILITIES, PUMPING AND COMPRESSOR STATIONS. TRADING OF CRUDE
OIL, NATURAL GAS, LPG, LNG, OIL & GAS PRODUCTS AND COMMODITIES.

EA/NACE Code : 21, 41-44, 46, 67, 68

Certificate No : K-2022-610

Issue Date : 14.07.2022

Valid Until : 13.07.2025



Genel Müdür



CERTIFICATE



UKS ULUSLARARASI
KALİTE SİSTEMLERİ VE
BELGELENDİRME
LTD. ŞTİ.

certifies according to TUV CERT Procedures that

Metalex Uluslararası İnşaat Grup Ticaret A.Ş.

Güzeltepe Mah., Ahmet Mithat Efendi Cad.,
No: 33/6 06690 Çankaya,
Ankara, TÜRKİYE

owns and operates a Quality Management System per

TS EN ISO 14001:2015

for the following scope of activities

ENGINEERING, DESIGN, PROCUREMENT, CONSTRUCTION, TESTING,
COMMISSIONING AND OPERATING OF NATURAL GAS, CRUDE OIL, WATER AND
PRODUCT PIPELINES, CRUDE OIL REFINERY UNITS, CENTRAL PROCESSING
FACILITIES, FIXED AND FLOATING ROOF CYLINDRICAL AND SPHERICAL TANKS,
TERMINAL AND STORAGE FACILITIES, FLOW LINES, GATHERING LINES, UPSTREAM
SURFACE FACILITIES, PUMPING AND COMPRESSOR STATIONS. TRADING OF CRUDE
OIL, NATURAL GAS, LPG, LNG, OIL & GAS PRODUCTS AND COMMODITIES.

Certificate No : **K-2022-734**
Issue Date : **23.11.2022**
Valid Until : **22.11.2025**



Genel Müdür





UKS ULUSLARARASI
KALİTE SİSTEMLERİ VE
BELGELENDİRME
LTD. ŞTİ.

CERTIFICATE

We hereby certify that Operational Health and Safety Management System of

Metalex Uluslararası İnşaat Grup Ticaret A.Ş.

Güzeltpe Mah., Ahmet Mithat Efendi Cad.,
No: 33/6 06690 Çankaya,
Ankara, TÜRKİYE

has been audited as per the requirements of

ISO 45001:2018

and approved/certified for the following scope of activities:

ENGINEERING, DESIGN, PROCUREMENT, CONSTRUCTION, TESTING,
COMMISSIONING AND OPERATING OF NATURAL GAS, CRUDE OIL, WATER AND
PRODUCT PIPELINES, CRUDE OIL REFINERY UNITS, CENTRAL PROCESSING
FACILITIES, FIXED AND FLOATING ROOF CYLINDIRICAL AND SPHERICAL TANKS,
TERMINAL AND STORAGE FACILITIES, FLOW LINES, GATHERING LINES, UPSTREAM
SURFACE FACILITIES, PUMPING AND COMPRESSOR STATIONS. TRADING OF CRUDE
OIL, NATURAL GAS, LPG, LNG, OIL & GAS PRODUCTS AND COMMODITIES.

İlk Denetleme Tarihi/Date of Initial Assessment: 28/02/2018

Tescil Tarihi/Date of Registration: 12/04/2018

Yenieme Tarihi/Date of Reissue: 27/02/2021

Geçerlilik Tarihi/Date of Expiry: 27/02/2024

Verilme Sayısı/Issue Number: 2

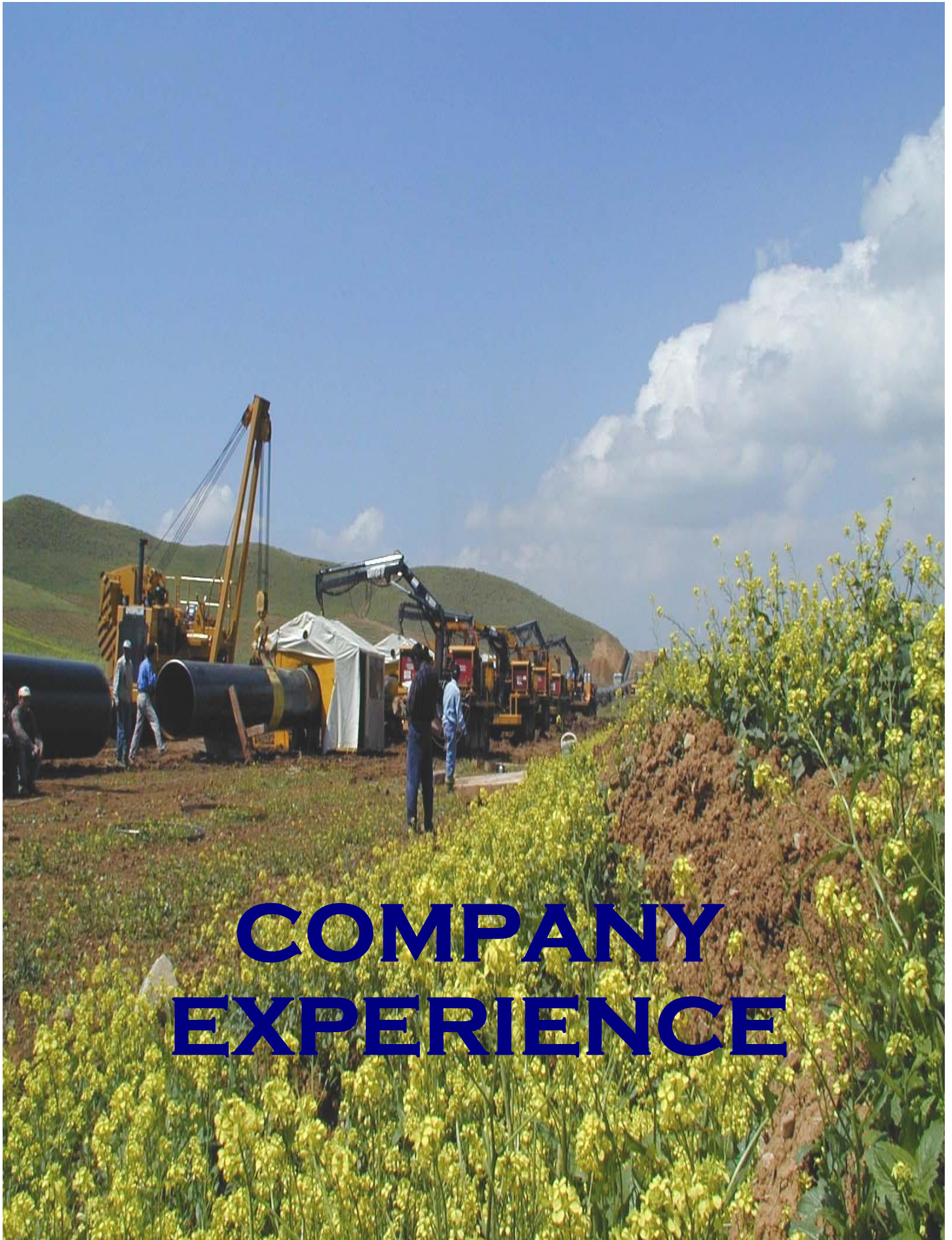


Genel Müdür



Recep Peker Cad. Rifat Bey Sk. No.2 Kat:4 Kızıltoprak / İSTANBUL / TÜRKİYE

http://www.ukselgelendirme.com.tr E mail: info@uksbelgelendirme.com.tr Telefon: +90 216 330 45 77 Pbx



COMPANY EXPERIENCE

COMPLETED PROJECTS

Owner : Turkish Armed Forces, Ankara, Turkey

Name of Project : Göcek Stadium Project

Contract Date : 2015, March 06

Completed Date : 2016, September 13



Scope of Works : Turn-key delivery of 3000 people capacity military stadium.

Value of the Work : US\$ 48,417,740.00



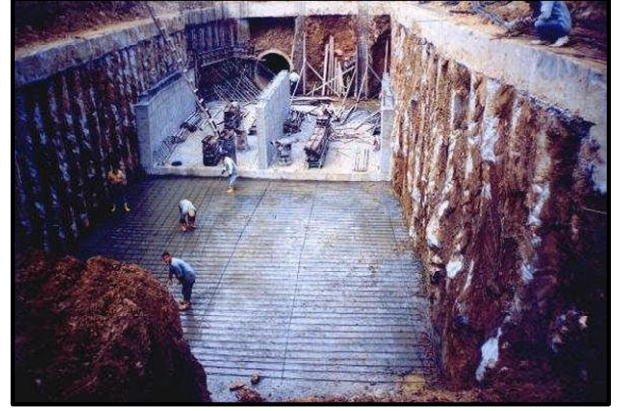
COMPLETED PROJECTS

Owner : İstanbul Metropolitan Municipality / İSTANBUL

Name of Project : River Bed Improvement of Seyit Ahmet River Kadıköy / İSTANBUL / TÜRKİYE

Contract Date : 2014, June 23

Completed Date : 2016, July 13



Scope of Works : Excavation, 2 Way Canal Concrete, Every Kind of Pile, Horizontal Drill, Filling Rock, Waste Water, Fresh Water, Electrical and Mechanical Works.

Value of the Work : US\$ 221,751,950.00

The Amount of Workdone :

| | |
|-----------------------------------|-------------------|
| Excavation : | 138.000.m3 |
| Filling Rock : | 16.000.m3 |
| Filling (Material) : | 53.000.m3 |
| Ø800mm Pile : | 44.000.mt |
| Horizontal Drill : | 120.mt |
| Pipe Ø100-Ø1000 Concrete : | 1.200.mt |
| Concrete : | 23.000.m3 |
| Plywood : | 47.000.m2 |
| Iron Works : | 87.000.kg |



COMPLETED PROJECTS



Owner : Ankara Metropolitan Municipality
BELKO Ltd. Administration /
ANKARA

Name of Project : Production Transportation and Laying of
Binder and Wearing Asphalt Course of
Various Street and Roads of Ankara (I.
Section) / ANKARA / TÜRKİYE

Date of Contract : 2015, June 01

Completed Date : 2016, April 05

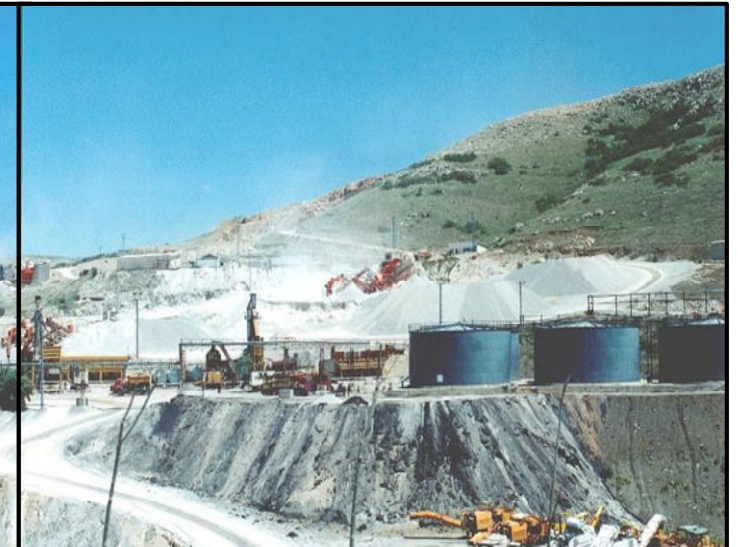


Scope of Works : Laying of Corrosion, Laying of Binder,
Laying of Plentmix, Excavating
Asphalt with Trimmer Machine

Value of the Year: US\$ 197,159,306.00

The Amount of Workdone :

| | |
|---|--------------|
| Laying of Plent : | 577.500.Tone |
| Laying of Plentmix : | 577.500.Tone |
| Laying of Binder : | 577.500.Tone |
| Laying of Corrosion : | 577.500.Tone |
| Asphalt Patching : | 54.000.Tone |
| Excavating Asphalt with Trimmer Machine : | 30.100.Tone |



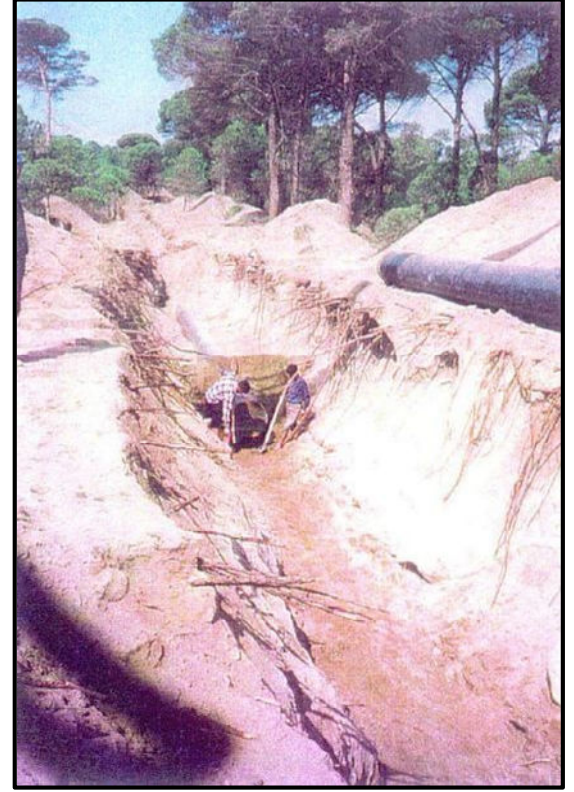
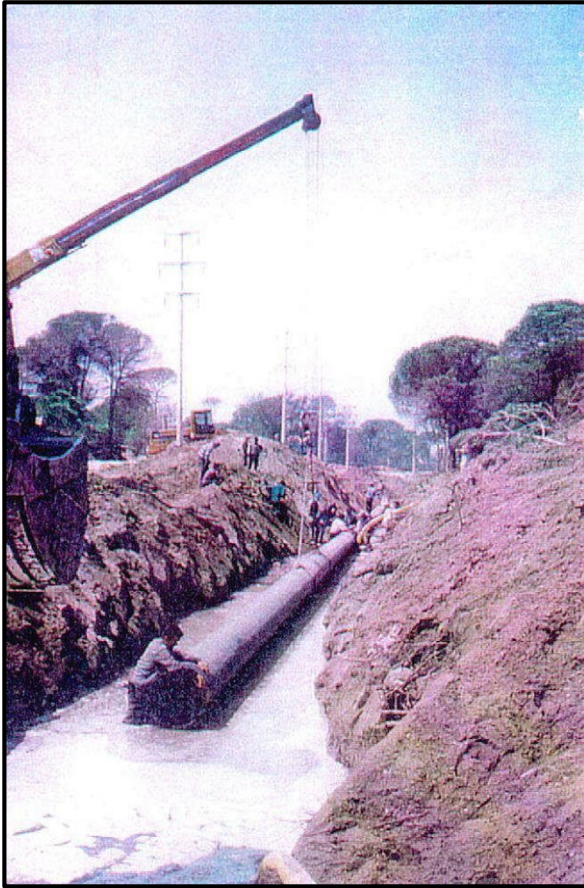
COMPLETED PROJECTS

Owner : Antalya Metropolitan Municipality
ASAT Antalya Metropolitan Water and
Sewerage Administration / ANTALYA

Name of Project : The Contractor of the Waste Water
Treatment Project of Antalya Including
Upgrading the C.13-R1 Pipelines,
Rehabilitation and Renewation the
Countred Locate Placed in the Group I/
ANTALYA / TÜRKİYE

Date of Contract: 2016, April 30

Completed Date : 2017, April 30



Scope of Works : Pipeling of (Every Kind Ground)
Ø100-300mm HDPE Pipes and
Ø500-800mm Steel Pipe, Pipeling
Fresh Water and Renewation the
Countred Locate Placed Works

Value of the Year: US\$ 144,211,092.00

The Amount of Workdone :

| | |
|--|------------------|
| Pipeling Ø100-300mm HDPE Pipe : | 11.350.mt |
| Pipeling Ø500-800mm Steel Pipe : | 2.650.mt |
| Ø100-800mm Resilient Seat Valve : | 95.ad |
| Valve Room and Equipments : | 1.ad |
| Fire Equipments : | 12.ad |
| Pipeling Fresh Water and Renewation : | 140.ad |



COMPLETED PROJECTS

Owner : Mercedes – Benz Türk Co., Inc / TÜRKİYE

Name of Project : Custom Barn Building and Approach Roads
of the Truck Factory Buildings AKSARAY /
TÜRKİYE

Contract Date : 2017, October 11

Completed Date : 2018, October 10



Scope of Works : Custom Barn Building, Mechanical
and Electrical Connections,
Concrete Roads, Steel Structure

Value of the Work : US\$ 18,863,970.00

The Amount Workdone :

| | |
|--------------------------------------|-------------|
| <i>Steel Structure :</i> | 116.00.tone |
| <i>Vacuum Concrete :</i> | 7.000.m3 |
| <i>Roof and Front Plating :</i> | 4.000.m2 |
| <i>Filling – Spread - Compress :</i> | 36.500.m3 |
| <i>Concrete Roads :</i> | 750.mt |



COMPLETED PROJECTS

Owner : GİMAT Business Enterprise Co., Inc. / ANKARA

Name of Project : Construction of Gimat Center Excavating and Ground Improvement and Retaining System by Anchored Cast in-situ Piles of Ø65cm and Ø80cm and Pile Foundation Ø100cm Akköprü / ANKARA / TÜRKİYE

Contract Date : 2017, March 17

Complete Date : 2017, October 30



Scope of Works : Excavation, Filling, Anchored Cast In-situ Piles Ø65cm and 80cm and 100cm Pile Foundations, Geo-grid Spread and Compress, Mechanical Works

Value of the Year: US\$ 49,217,080.00

The Amount Workdone :

| | |
|--|-------------------|
| Excavating : | 400.000.m3 |
| Filling : | 15.0000.m3 |
| Geo-grid Spread and Compress : | 35.000.m2 |
| Anchored Piles Ø650-750-100mm : | 11.500.mt |
| Pipeling Ø300-2000 Concrete : | 500.mt |
| Foundation Concrete : | 3.000.m3 |



COMPLETED PROJECTS

Owner : Antalya Metropolitan Municipality
ASAT Antalya Metropolitan Water and
Sewerage Administration / ANTALYA

Name of Project : The Contractor of the Waste Water
Treatment Project of Antalya Including
Upgrading the C.13-R1 Pipelines,
Rehabilitation and Renewation the
Countred Locate Placed in the Group I/
ANTALYA / TÜRKİYE

Date of Contract: 2018, April 30

Completed Date : 2019, April 30



Scope of Works : Pipeling of (Every Kind Ground)
Ø100-300mm HDPE Pipes and
Ø800mm Steel Pipe, Pipeling Fresh
Water and Renewation the Countred
Locate Placed Works

Value of the Year: US\$117,300,596.00

The Amount of Workdone :

| | |
|---------------------------------------|----------|
| Pipeling Ø100-300mm HDPE Pipe : | 7.500.mt |
| Pipeling Ø800mm Steel Pipe : | 1.150.mt |
| Ø100-800mm Resilient Seat Valve : | 66.ea |
| Valve Room and Equipments : | 1.ea |
| Fire Equipments : | 14.ea |
| Pipeling Fresh Water and Renewation : | 485.ea |



COMPLETED PROJECTS

Owner : ERENCO, Ereğli Iron and Steel Works
Turk Co., Inc. / KDZ.EREĞLİ

Name of Project : Construction of Pile Foundation Mainly
Ø45cm Total 60.000.mt. Long
Kdz.Ereğli / ZONGULDAK / TÜRKİYE

Contract Date : 2019, July 16

Completed Date : 2020, January 16



Scope of Works : Steel Pile with Anchored Ø450mm,
Ø323.85mm, Rotary Pile Ø300mm

Value of the Year : US\$ 32,364,320.00

The Amount Workdone :

| | |
|------------------------------------|------------|
| <i>Pile Ø450mm :</i> | 40.800.mt |
| <i>Pile with Anchored Ø450mm :</i> | 10.0000.mt |
| <i>Steel Pile Ø323.85mm :</i> | 2.000.mt |
| <i>Rotary Pile Ø300mm :</i> | 1.250.mt |
| <i>Anchored 120mm :</i> | 500.mt |

COMPLETED PROJECTS

Owner : İstanbul Metropolitan Municipality /
İSTANBUL / TÜRKİYE

Name of Project : Construction for Europe Side Road and
Infrastructural Works of 4.th. Section
İKİTELLİ / İSTANBUL / TÜRKİYE

Contract Date : 2018, December 19

Completed Date : 2020, June 15



Scope of Works : Excavation, Filling, Every Kind of
Pipeling, Grill, Electrical –
Mechanical – Natural Gas – PTT
Pipeling

Value of the Year 2005 : US\$ 89,240,025.00

The Amount Workdone :

| | |
|------------------------------------|-------------------|
| Excavating : | 419.000.m3 |
| Filling Rock : | 118.500.m3 |
| Pipeling ø300-1000mm : | 12.000.mt |
| Spread and Compress : | 130.200.m3 |
| Pipeling Fondüktıl Pipe : | 4.600.mt |
| Manhole Works : | 140.ea |
| Valve ø 100-250mm : | 10.ea |
| Plywood : | 33.000.m2 |
| Concrete : Iron | 33.500.m3 |
| Works : Electrical | 23.000.kg |
| Works : | 3.300.mt |
| Natural Gas and PTT Works : | 4.200.mt |
| Transporting : | 985.000.kg |



COMPLETED PROJECTS

Owner : General Directorate of State Hydraulic Works of Local Section of 23 of Republic of Turkey / BARTIN

Name of Projects : Rehabilitation of Flood Protection Structures According to 100 Years Flood in Bartın - BARTIN/ TÜRKİYE

Başlama Tarihi : 2019, April 29

İş Bitim Tarihi : 2020, October 24



Scope of Works : Rock Excavation and River Bed Improvement

Value of the Year: US\$ 75,062,825.00



The Amount of Workdone :

| | |
|---------------------------------|-------------------|
| Rock Excavation : | 345.000.m3 |
| Under Foundation : | 4.700.m2 |
| Rip – Rap Works : | 6.600.m2 |
| Rock Loading Under Sea : | 1.750.m3 |
| River Bed Improvement : | 73.000.m3 |
| Road : | 600.mt |



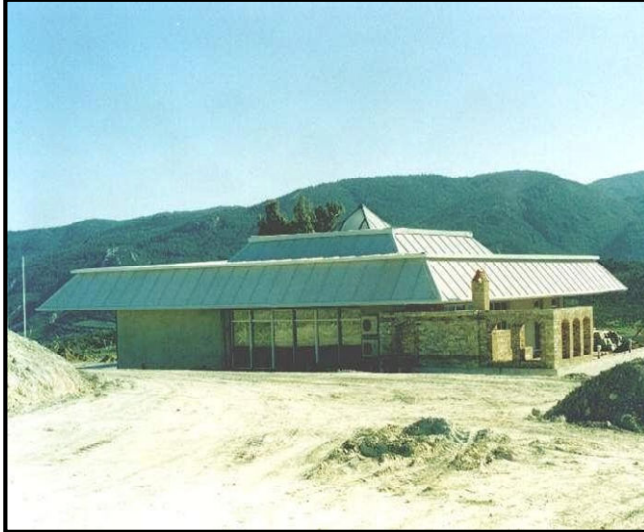
COMPLETED PROJECTS

Owner : S.A.E. International FRANCE

Name of Project : Scala Nova Golf Project Söke – Golftaş
First Stage Civil Works / AYDIN /
TÜRKİYE

Contract Date : 2018, October 25

Completed Date : 2020, September 30



Scope of Works : Private Villa Constructions,
Mechanical and Electrical
Connections, Pool, Natural
Environment

Value of the Work : US\$135,000,000.00

The Amount Workdone :

Private Villa Constructions, Mechanical and
Electrical Connections, Pool, Natural
Environment



COMPLETED PROJECTS

Owner : General Directorate of BOTAŞ Natural Gas Division / KOCAELİ / TÜRKİYE

Name of Project : Compressor Station CS-3 Project of TP Pendik of BOTAŞ / KOCAELİ / TÜRKİYE

Contract Date : 2019, January 15

Completed Date : 2020, June 31



Scope of Works : Construction of Facility, Piping, Building Mechanical and Electrical Installations

Value of the Year: US\$ 66,582,850.00

The Amount Workdone :

Construction of Control and Electric Building, Service and Repair Building, Pump Building, Transformer Building, Valve Building, Retaining Wall, Water Depot, Boiler



COMPLETED PROJECTS

Owner : İstanbul Metropolitan Municipality/
İSTANBUL

Name of Project : Construction for Anadolu Side River Bed
Improvement of Tuzla River 2.th. Section
Tuzla / İSTANBUL / TÜRKİYE

Contract Date : 2019, March 17

Completed Date : 2021, June 05

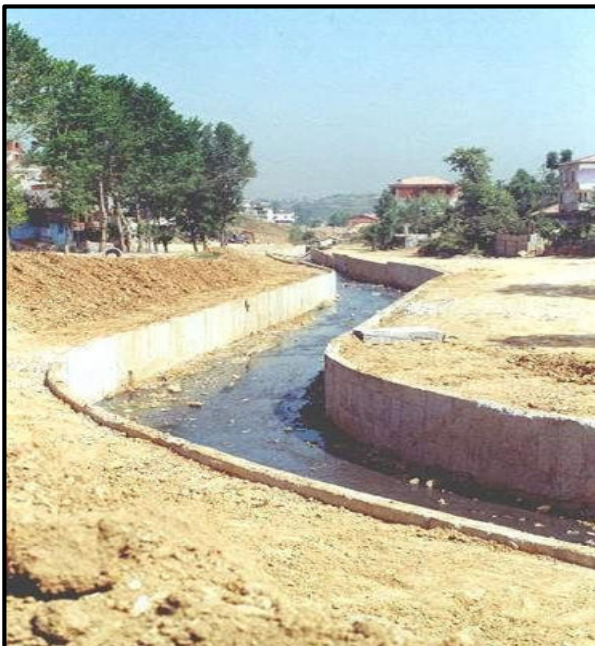


Scope of Works : Excavation, Filling, Every Kind of
Pile, Pipeline, Concrete Pipe, Waste
Water

Value of the Year : US\$ 74,791,120.00

The Amount Workdone :

Excavating : 257.500.m3
Filling Rock : 118.500.m3
Pile Ø800mm : 1.950.mt
Pipeling Ø300-Ø600 Concrete : 5.555.mt
Shaft : 78.ea
Concrete : 3.150.m3
Plywood : 49.400.m2
Iron Works : 15.500.kg
Transporting : 565.000.kg



COMPLETED PROJECTS

Owner : 2nd. Armed Forces / İSTANBUL

Name of Project : Construction for 3 ea. Prefabricate Buildings and 4 ea. Pressed Buildings Cevizli / İSTANBUL / TÜRKİYE

Contract Date : 2020, December 23

Completion Date : 2021, June 23



Scope of Works : Prefabricated and Pressed Buildings

Value of the Work : US\$ 43,775,650.00

The Amount Workdone :

4nd. Division Building, 2nd. Division Building,
Sport Hall and Library Building,
Support Division Prefabricate Depot Building,
Tow Division Air Defense Building,
Mess Hall, Cinema Hall



COMPLETED PROJECTS

Owner : Republic of Turkey, Turkish State Highway Directorate of XIV. District BURSA / TÜRKİYE

Name of Project : State Highway Between Km: 42+750 – 154+500 Removal Topsoil, Utilities and Superstructure Works of Bursa – Karacabey Road BURSA / TÜRKİYE

Contract Date : 2020, February 02

Completed Date : 2021, October 30

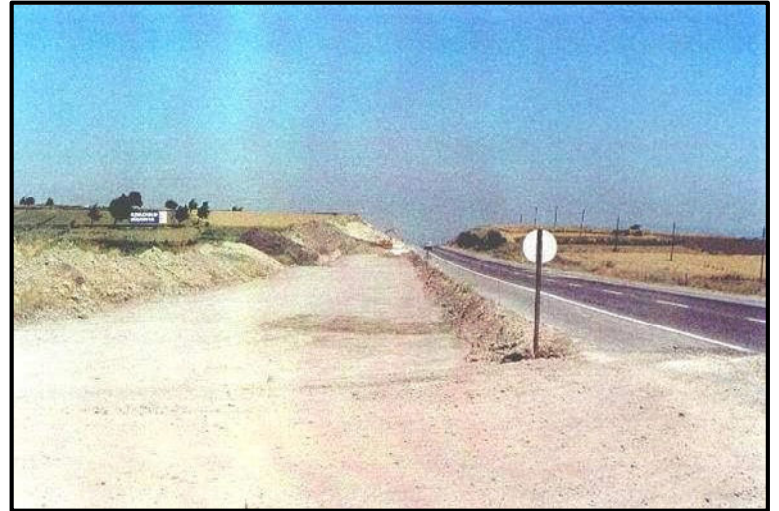


Scope of Works : Removal Topsoil, Utilities, Superstructure, box culvert, Filling with Rock, Foundation and Under Foundation Works

Value of the Year: US\$ 305,122,670.00

The Amount of Workdone :

Excavation : 569.000.m3
Spread and Compress : 173.000.m3
Filling with Rock : 40.500.m3
Leveling Works : 9.km
Under Foundation : 8.500.m3
Foundation : 650.m3
Superstructure : 37.000.m3
Transporting : 80.000.m3



COMPLETED PROJECTS

Owner : İstanbul Metropolitan Municipality

Name of Project : Construction for River Bed Improvement of Darıcilar River and Rain Water Drainage of Dinleç Road DARICILAR / İSTANBUL / TÜRKİYE

Contract Date : 2021, February 06

Completion Date : 2021, October 12



Scope of Works : Excavation, Filling, Pipeling
Ø2500mm Concrete Pipe

Value of the Year: US\$ 58,150,415.00

The Amount Workdone :

Excavation : 149.000.m3
Filling with Rock : 76.750.m3
Pipeling Ø300-2500mm Concrete Pipe : 5.500.mt
Shaft : 55.ea
Grill : 62.ea
Ground Plate with Parquet : 4.300.m2
Concrete : 2.600.m3
Iron Works : 34.500.Kg
Transporting : 243.000.Kg



COMPLETED PROJECTS



Owner : Republic of Turkey Turkish State Highway

Name of Project : Construction of Toprakkale – İskenderun Expressway Reinforced Earth Retaining System İSKENDERUN / TÜRKİYE

Contract Date : 2021, February 02

Completed Date : 2022, October 30



Scope of Works : Reinforced Earth Retaining Systems

Value of the Year 2005 : US\$ 142,300,000.00

The Amount Workdone :

Reinforced Earth : 203.00.km
Concrete : 315.000.m3



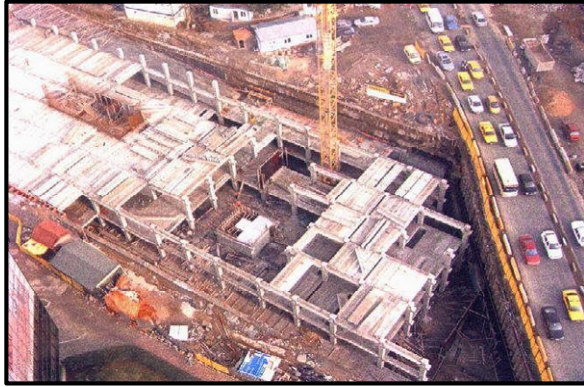
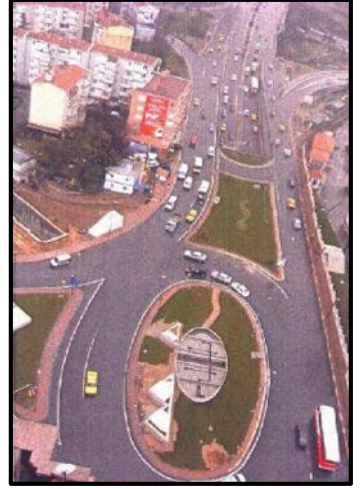
ONGOING PROJECTS

Owner : Beşiktaş Municipality / İSTANBUL

Name of Project : Construction of Yıldız Multi-Level Intersection with Underpassing and Bridges / Beşiktaş / İSTANBUL / TÜRKİYE

Contract Date : 2022, October 25

Due Comp. Date : 2025, March 19



Scope of Works : Construction, Mechanical Installation, Electrical Installation, Underpassing Intersection, Bridge, Tunnel, Multi-Level Garage, Steel Valve, Installation Transformer.

Value of the Year 2005 : US\$ 390.315.000.00

The Amount of Workdone :

Tunnel : 2 ea. Every Each 170.mt
Multi-Level Park Garage : 13.800.m2, 3 Level, 400 Automobile

Ø80cm Pile : 11.550.mt

Ø25cm Pile : 8.600.mt

Anchored : 7.800.mt

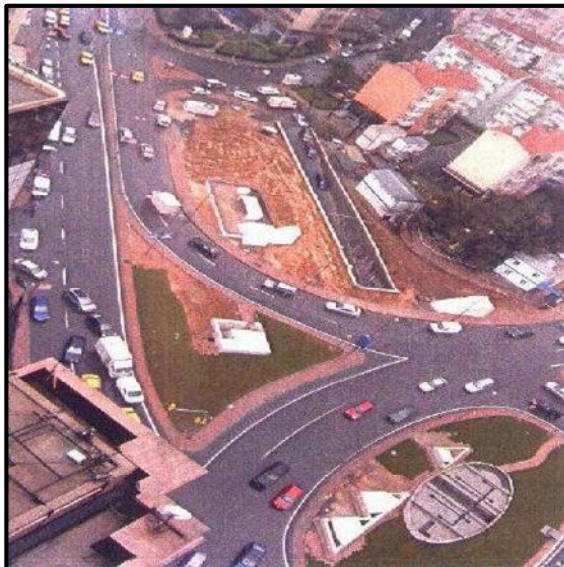
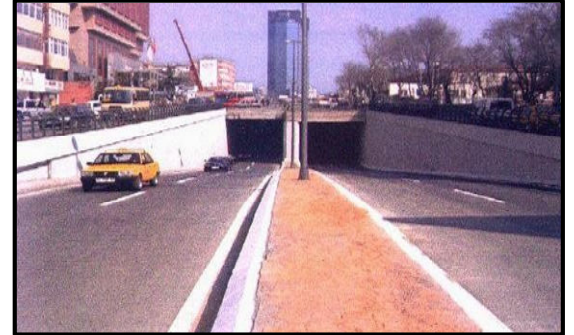
Concrete : 12.000.m3

Iron : 4.250.Tone

Fron Side Covering : 6.800.m2 Prekast

Horizontal Drill : 180.mt, Ø1600mm Concrete Pipe

Transformer, Generator, Fire Alarm Installation, Installation of Ventilation-Warming-Cooling, Elevations



ONGOING PROJECTS

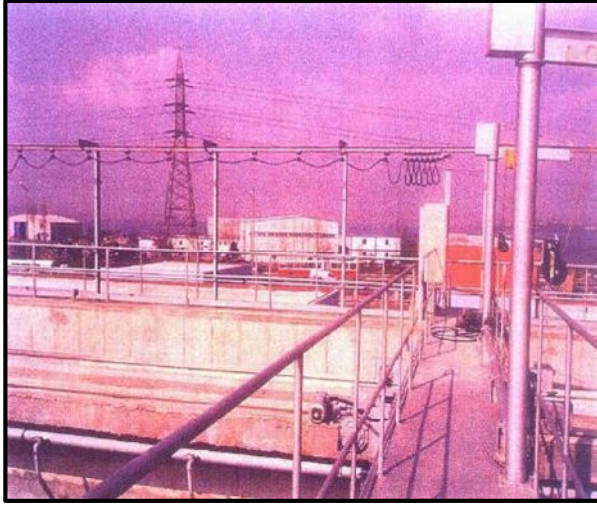


Owner : İstanbul Metropolitan Municipality /
İSTANBUL / TÜRKİYE

Name of Project : Avclar Main Collector Connection
Avclar / İSTANBUL / TÜRKİYE

Contract Date : 2022, January 05

Due Comp. Date : 2024, January 12



Scope of Works : Mechanical Installation Waste Water Connection, Piping Ø800 – 2600mm Concrete Pipe, Piping Ø300-600mm Concrete Insulated Pipe

Value of Work : US\$ 84,322,500.00

The Amount of Workdone :

Connection Avclar Collector to Marmara Main Collector

| | |
|--|------------------|
| Excavation : | 96.700.m3 |
| Palplanj : | 45.500.m2 |
| Filing : | 27.400.m3 |
| Pipeling Concrete Pipe (Ø800-2600) : | 3.500.mt |
| Pipeling Concrete Insulated Pipe (Ø300-600) : | 6.000.mt |



CONSTRUCTION, MAINTENANCE AND REPAIR PROJECTS IN REFINERIES, OIL & GAS FACILITIES AND INDUSTRIAL PLANTS



Skillful, experienced management is vital for the success of any project. METALEX understanding of the concept provides total capability resources for projects of any size. Bringing together experts from many fields, including contract administration, conceptual and detailed engineering, procurement, manufacturing, construction, quality assurance and budget control. All team members have knowledge of advanced software and communications capabilities for collecting and analyzing information about the progress of projects and the use of computerized systems for project planning and management.

METALEX has exceptional experience in supplying personnel for refining chemicals, petrochemicals, minerals extraction, fine chemicals and pharmaceuticals, pulp and paper, power generation, iron & steel industries.

METALEX success is based on a total commitment to excellence. The continued pursuit of quality in all disciplines and aspects of our business gives us a quantifiable competitive edge. We strive to ensure that all resources are identified right, first time.

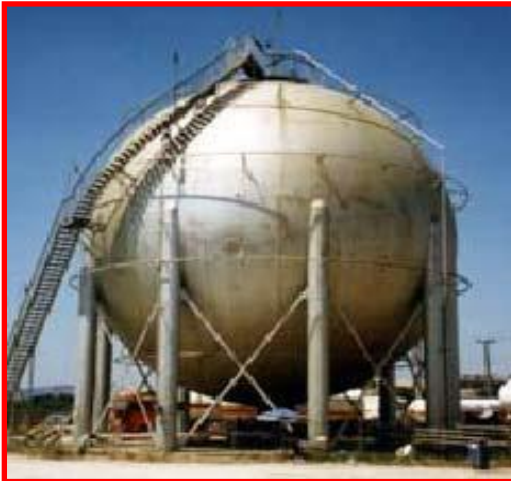
Central to our philosophy is our ability to form an effective partnership with clients. Whatever the project or problem, we aim to become an integral component of the solution for clients needs.



We establish a clear understanding of clients' needs right from the start to provide precisely what is required. Our clients enjoy significant cost, security, and quality benefits that result in a more efficient use of the resources supplied. Our part is to make sure that the right people are in the right place doing the right thing at the right time. As evidence of the service provided by METALEX, we are proud to have many repeat clients. The entire METALEX organization seeks not only to satisfy our clients, but to surpass their expectations. Our aim is to provide professional, cost effective services of uncompromising quality & integrity.

We seek to be the "preferred choice" of our clients based on proven performance.

INSPECTION OF PRESSURIZED VESSELS & PIPELINES WITH ACOUSTIC EMISSION TECHNOLOGY



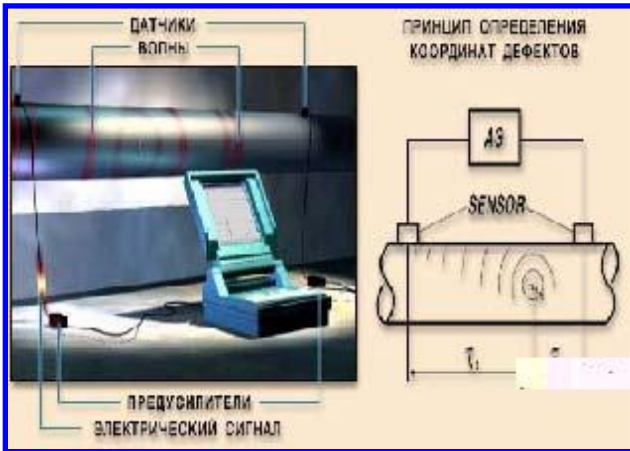
METALEX-ELTEST is engaged in technical diagnosing of different facilities in petroleum, gas, chemical, petrochemical, oil refining industry some of them working with explosive, toxic and harsh environments. Russian Company **ELTEST** is a leader in the field of study and practical application of acoustic emission (AE) technologies. They possess the perfect AE equipment, testing ground, training center, the well-proven control techniques, a significant databank of various equipment defects and qualified experts. AE technology bases on result of the long-term fundamental researches including study of acoustic emission processes at deformation and destroying of materials. It is a practical method of non-destructive testing based on the phenomenon of **ACOUSTIC EMISSION** and allows prevention and localization of a phase of possible breakdown. The method allows detecting defects such as cracks, zones of significant corrosion damages, plastic deformations and leaks.

The acoustic emission diagnostics provides the non-destructive control of the state of pipelines, petrochemical industry equipment, reservoirs, high-pressure vessels, bridges and cranes. Russian Company **ELTEST** owns all necessary licenses of the state municipal technical supervision committee of Russia for the performance of the diagnostics works relevant to pipelines and petroleum chemistry constructions. This brings the rights for the durability resource estimation and giving out the conclusion.



METALEX-ELTEST partnership has evolved from the idea to provide AE diagnostics services to the Clients based in Middle East, Gulf and North African countries while **ELTEST** is handling the Former Soviet Union on its own. Depending on the demand from the customer, diagnostics can be performed without stopping the operation or product transfer. Our pricing for the cited geographical area depend on the services required and it is much lower than the pricing of the same services provided by the western origin companies. Only in 1998-2006 period **METALEX-ELTEST** executed diagnostics of pipelines and high-pressure vessels at 57 plants. Under a preliminary agreement with the Clients, **METALEX-ELTEST** experts mobilize to the location of the facilities to perform the necessary works. We permanently employ minimum 5 teams with a full hardware and software.

ACOUSTIC EMISSION METHOD

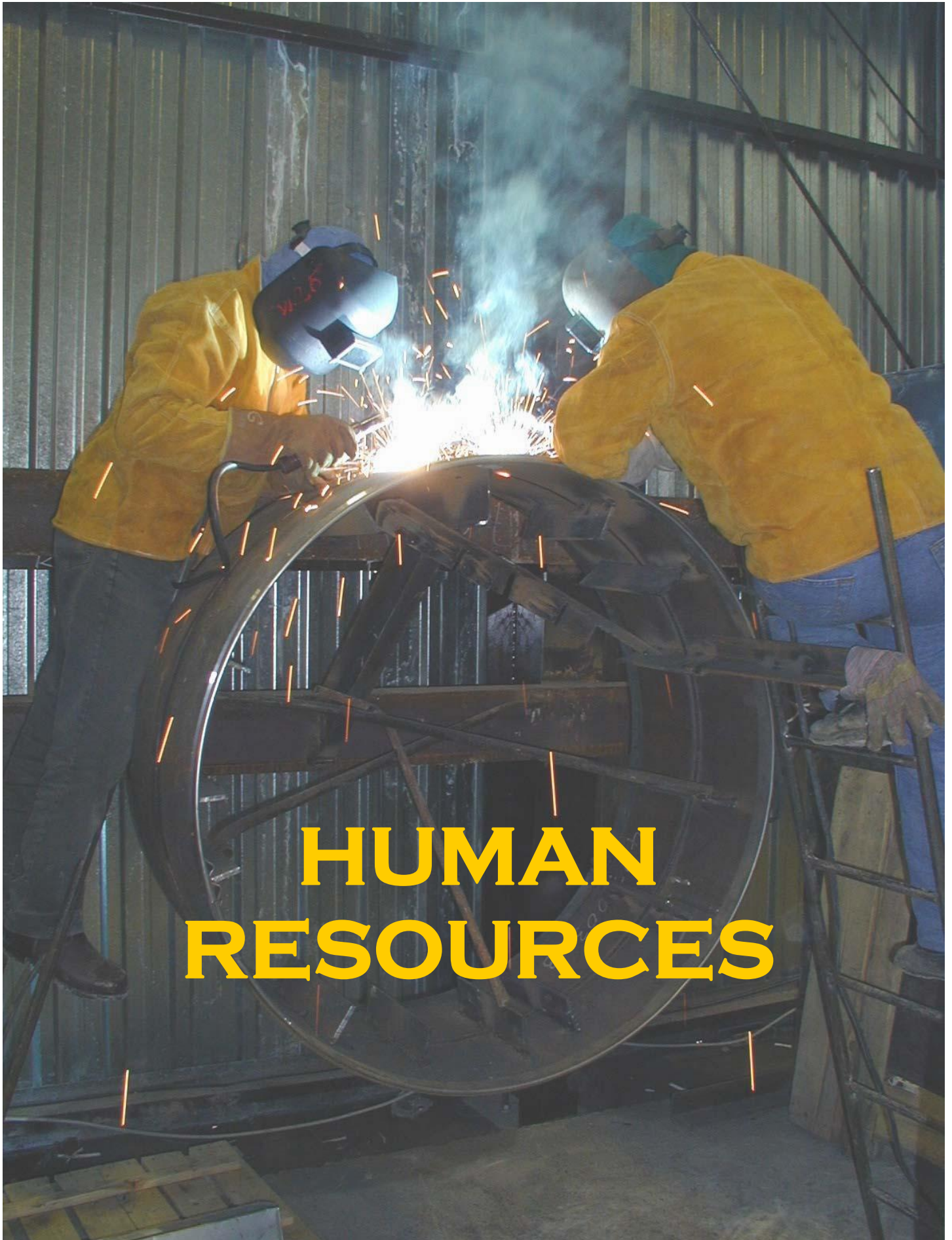


The method is based on the registration of the elastic compression waves emitted by the defects developing in the stressed constructions. The compression waves propagating through the metal reach the sensors and then they are transformed into electric signals. These signals are thereafter filtered, amplified and registered by a computer and special software. The subsequent analysis of the registered signals determines the existence of the defect, their coordinates and the level of risk and danger they create. Acoustic emission method provides the possibility to determine and localize the locations of possible damage in advance. Types of the detected defects are cracks, corrosion damages, zones of significant plastic deformation and leaks.

The diagnostics can be performed without any shut-down requirement and interruption of the product pumping. Among the existent non-destructive control methods, the acoustic emission method is the only one that provides to eliminate completely the sudden probable damages on pipelines and vessels. In year 2005 only, AE Tests conducted for 9 customers by METALEX-ELTEST on various facilities in the geographical area revealed more than 33,200 defects of 4th and 5th levels (less dangerous) and 517 defects of 1st, 2nd and 3rd levels of danger which demand immediate liquidation or follow-up with repeated control in 6 months.



Another direction of joint activity of METALEX-ELTEST is the development and manufacturing of the multi-channel acoustic emission equipment of LOCUS series. This device has successfully passed the state tests in GOST Standard of Russia. The acoustic-emission devices of the Locus series are recommended for the non-destructive diagnostics of the equipment used in the petroleum, gas, and petrochemicals industry, as well as in the power engineering, shipbuilding, and other domains. It is also possible to install these devices permanently for continuous monitoring of the plant structures. In case we provide the devices' handling teaching, guarantee and post-guarantee service, free of charge software renovation and consultations are also provided.



HUMAN RESOURCES

MANAGEMENT BIOGRAPHIES

NOTE: Please find here below listed the short biographies of only the key personnel of Metalex Incorporation. The Curriculum Vitae of the listed key personnel and other personnel already under employment and/or employed in the previous projects and available for future projects are listed in the Staff Data Base of the company and can be submitted for further prequalification requirements. The Biographies of the Members of the Board of Directors are available separately.

AYDIN YURDAYAR CHAIRMAN & CEO

Aydın Yurdayar has a B. Sc on Mechanical Engineering from Middle East Technical University (M.E.T.U.), Ankara, Turkey. He conducted post graduate studies on industrial applications of Robotics and trajectory optimization of industrial robot manipulators in a joint program of M.E.T.U. with the University of Tokyo. After the university he has spent whole of his professional career exceeding 21 years in oil & gas industry. In international environment he got involved in various disciplines of oil & gas industry such as construction of pipelines, oil & gas facilities, refineries, oilfield development, hi-tech applications in construction & testing of pipelines, storage facilities, terminals and refinery units. Starting back in 1986 as a field engineer he worked in all phases of chain of command in oil & gas construction mainly on site and also in engineering & design teams. He worked as a professional Construction Manager & Project Manager in construction of more than 4,000 km of cross country pipelines to carry various hydrocarbons. His last outstanding post as a professional manager was in the 3.4 Billion US\$ Blue Stream Project. He was the Project Coordinator and a member of the Executive Committee of the international Joint Venture which constructed on turn-key basis the Turkish on-shore part of the Blue Stream Project. He founded Metalex Construction as a limited liability company in 1996 and converted it to incorporation in year 2000. The core of Metalex is formed by a group of highly experienced specialists who worked together with him as team members in most of the biggest energy and infrastructure projects in the Middle East and FSU countries, majority in Turkey, built over the last four decades. They have worked in the top posts of these projects as project managers, construction managers, site managers, QA/QC managers, spread-bosses, lead-engineers, specialists, supervisors and foremen covering all phases including engineering, design, material and equipment manufacturing & procurement, construction, quality control, testing, commissioning and operation. Dedication, trust and support of his team, the most valuable asset of the company, has turned Metalex Construction Industry Trading Co. Inc. into an international EPC contractor qualified by most of the major clients all over the world and competing with the biggest players of the industry within a decade.

HALDUN TUNA
ENGINEERING & DESIGN MANAGER

Haldun Tuna has an M. Sc. Degree from Middle East Technical University, Turkey on Electrical & Electronics Engineering. He has more than 20 years successful background in many key posts in engineering, construction and investment projects management. The first 10 years covers Turkish State establishment's contracts management of Power Plants, Infrastructure studies of Energy network including Turkish State Electricity Authority (T.E.K.). He worked for the Major projects of Turkey in the energy, iron & steel, oil & gas industries. His posts in the private sector covers Turkish and international engineering, construction & industry companies such as Guris, ERDEMIR State Iron & Steel Mills, ICDAS Steel Mill, TUPRAS Turkish State Refinery Corporation and Eaton Westinghouse Industries.

SEBNEM KUMRAL
BUSINESS DEVELOPMENT & GOVERNMENT RELATIONS MANAGER

Sebnem Kumral has a B.A. Degree in Political Science and Public Administration, from the Faculty of Economics and Administrative Sciences of Middle East Technical University, Turkey and she has a second Diploma from the Institute of Vocational Studies, Turkey. She has more than 20 years experience in various international governmental organizations worldwide. She worked as a Logistics Planner in the Production Program of F16 fighters by Turkish Aerospace Industries, Service Supervisor for OSCE Mission in Kosovo and Supervisory Staff for various international projects of UNHCR of United Nations and NGO's supported by UNHCR. Her duties included but not limited to project formulation, fund-raising; financial accounts, publicity and advocacy of human rights for migrants. She also worked as Special Adviser to some NGO's and Turkish Members of Parliament advising them on all political, social and economic trends. She was the Public and Community Relations Chief for Botas International Limited (BIL) within the scope of BP-Amoco led Baku-Tbilisi-Ceyhan Crude Oil Pipeline Project. She joined various training programs on different aspects of Health Safety and Environment (HSE) Management conducted by major oil companies.

NAZIVER TURAL
PLANNING & SCHEDULING MANAGER

Naziver Tural has an M. Sc. Degree from Middle East Technical University, Turkey on Industrial Engineering. She has more than 21 years successful background in many key posts solely on planning, scheduling and cost estimating. Her first 18 years covers various posts with Turkish Aerospace Industries (TAI) on various aircraft manufacturing programs. These include F16 fighter aircraft manufacturing program with General Dynamics, Cougar Helicopter manufacturing program, programs with Spanish CASA Industries on cargo aircraft manufacturing and passenger aircraft

parts manufacturing for Boeing and Airbus Industries. She was responsible for the development of master plans, steering schedules, master production schedules, assignment of resources and control of budgets and reporting to top level management. She has seen a series of advanced training programs on program management, risk management, MRP II, parametric estimating, etc with Boeing in the U.S. and Airbus Industries in Europe. She joined Metalex in 2003 to lead Metalex Planning & Estimating Team and adopted her deep resource planning experience to oil & gas facility construction projects.

KERIM INCE
PROCUREMENT MANAGER

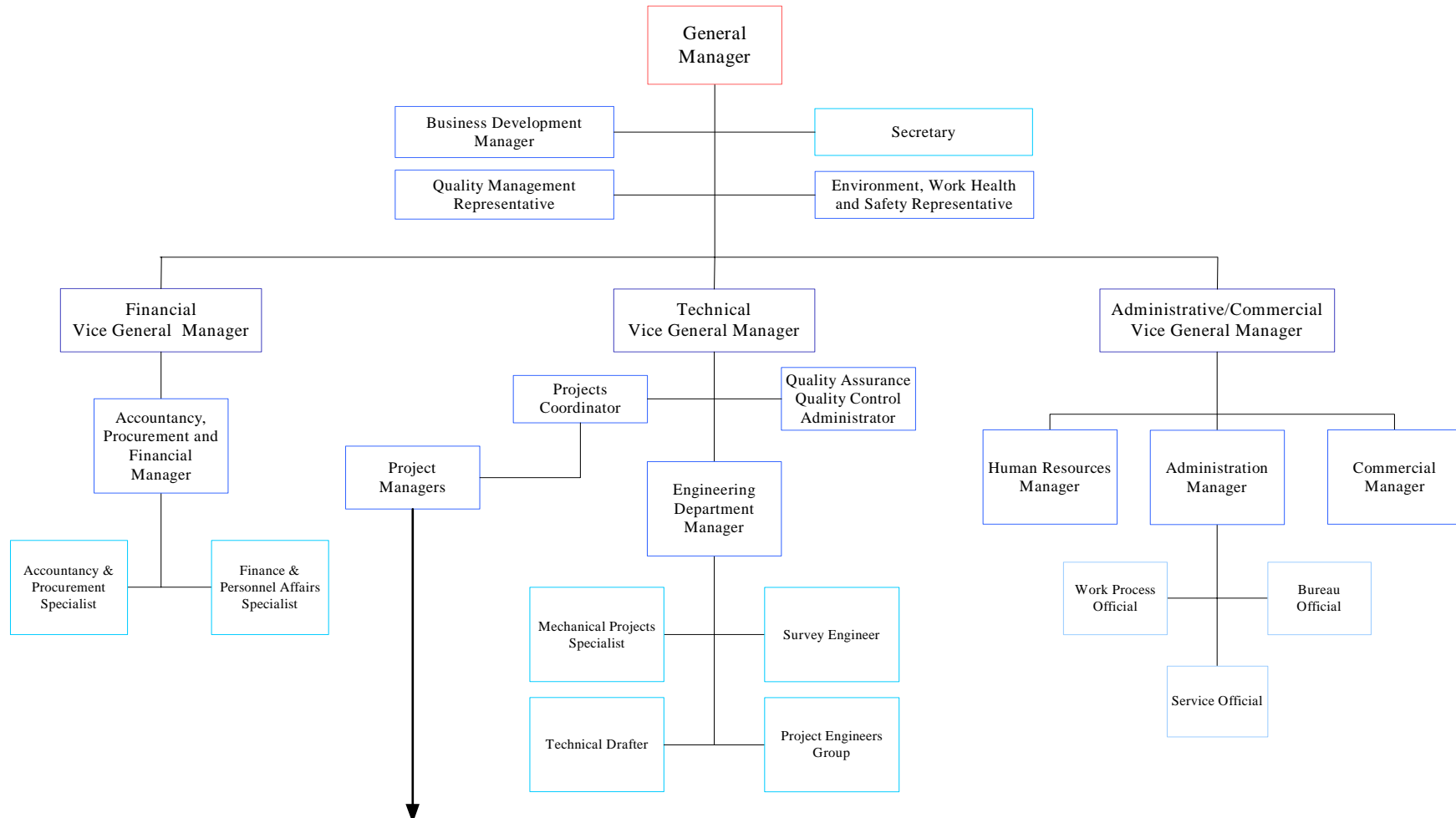
Kerim Ince has completed his Level A Chemistry, Biology, Physics and Law Training in U.K. and holds a B.A. (Hons) Degree on Politics from the University of Warwick, U.K. He holds both British and Turkish passport. He worked for 10 years in various organizations in the U.K. for procurement of materials, services and sub-contractors on project basis. These include the projects of London Transport Authority and various oil & gas companies. He joined Metalex team in 2004 and he is responsible for procurement of project materials & services from international markets. He also keeps and maintains the company data bases for vendors and sepcailist sub-contractors.

HIKMET YILDIRIM
ACCOUNTING & FINANCE MANAGER

Hikmet Yildirim has B. Sc. Degree in Advanced Computer Programming from the University of Caucasus in Nalchik, Russian Federation. In addition to this, he has PGS in accounting and economics in the University of Moscow. He has three years experience working as a commercial financial analyst as well as hands on experience in all levels of accounting. He has worked as a controller and CFO in commercial construction for over 15 years. He has general contracting experience, which includes large nationwide projects, as well as several years' experience in electrical contracting. His experience has allowed him to participate as an officer and on the Board of Directors of various organizations. He is a renowned expert on writing and developing construction accounting and estimating software.

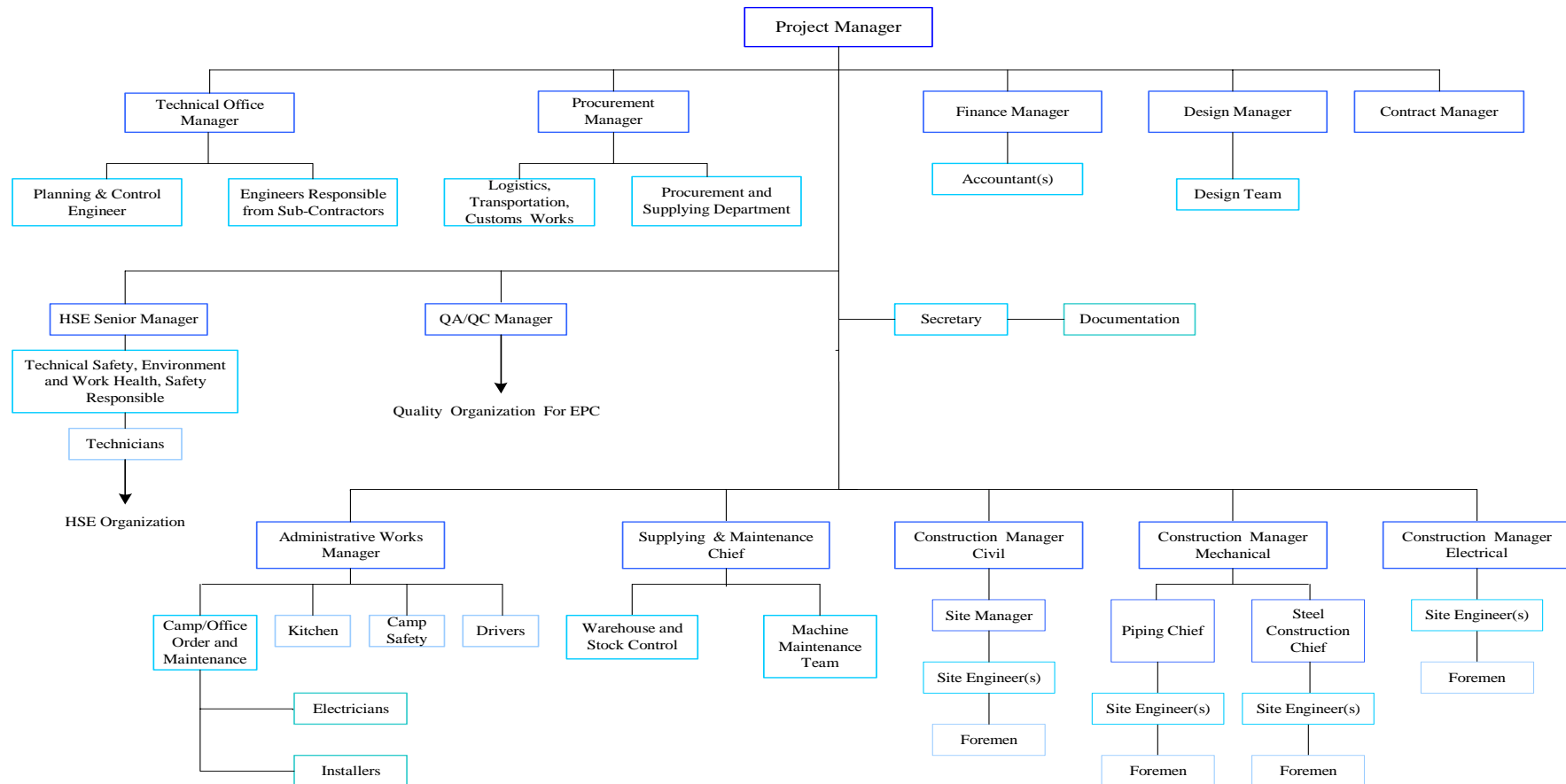
**ORGANIZATION CHART
HEADQUARTERS**

Validity Date: 01.01.2003
Rev. No: 0
Approved by: AYDIN YURDAYAR



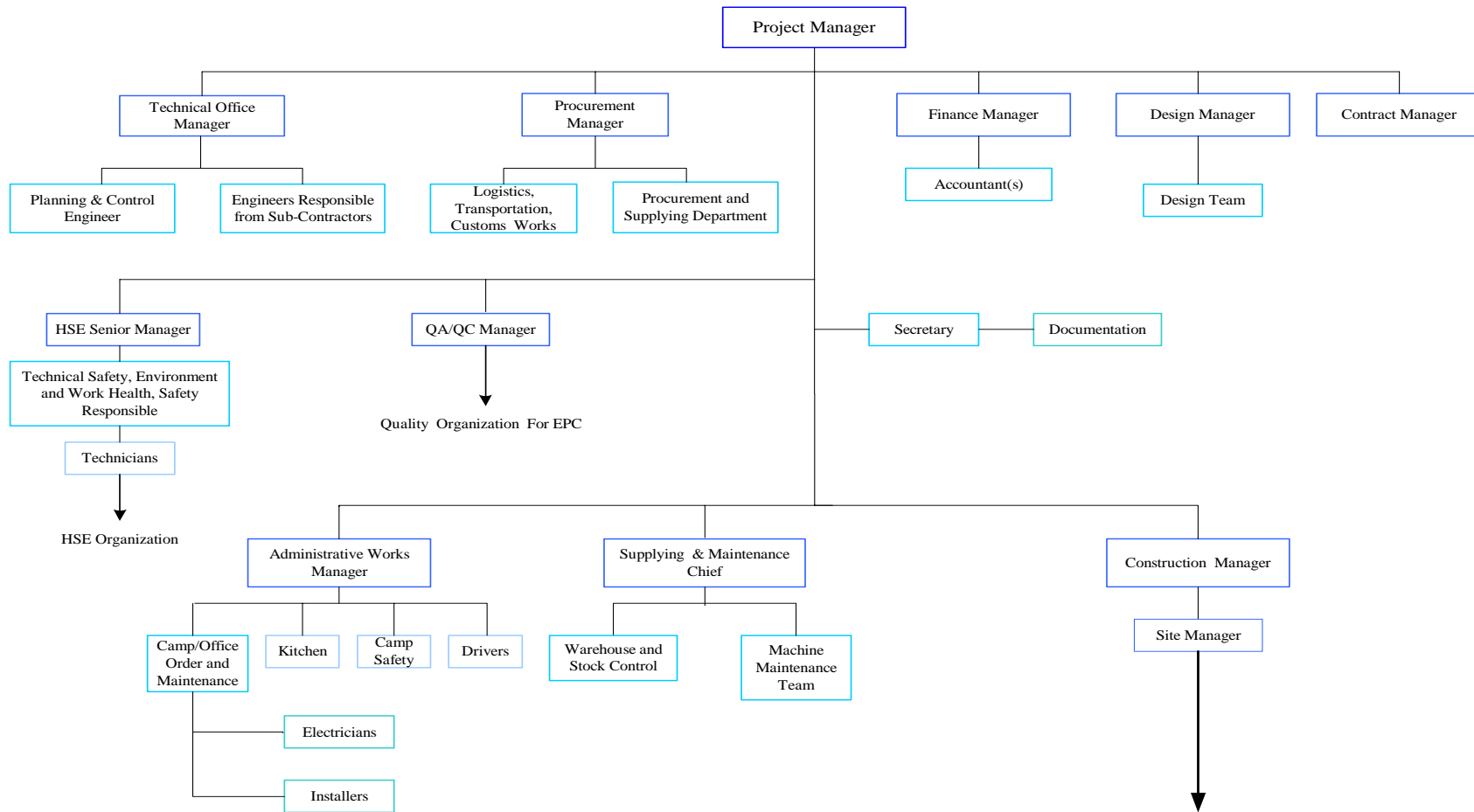
**ORGANIZATION CHART
WORKSITE**

INDUSTRIAL PROJECTS



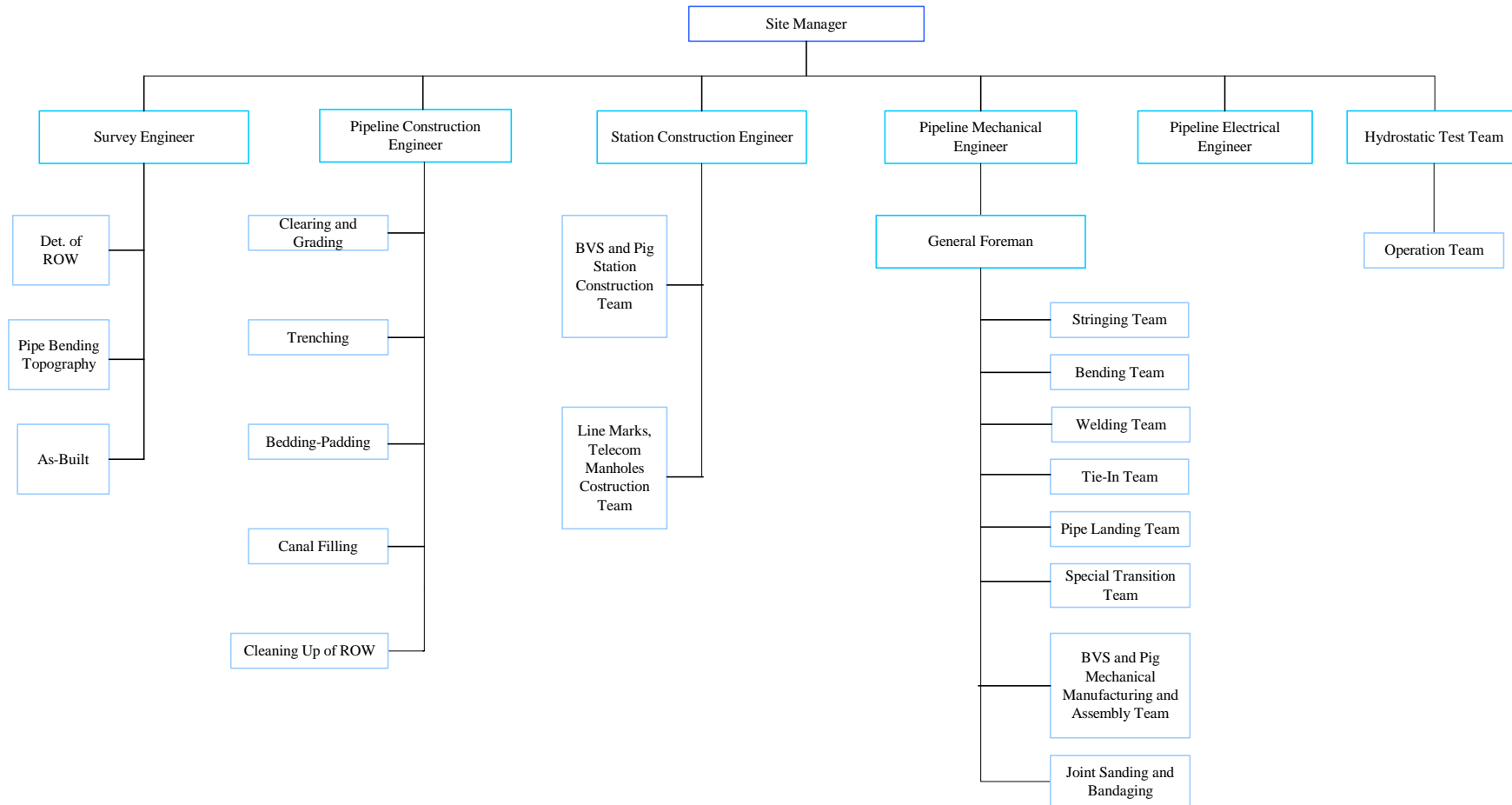
**ORGANIZATION CHART
WORKSITE**

PIPELINE CONSTRUCTION



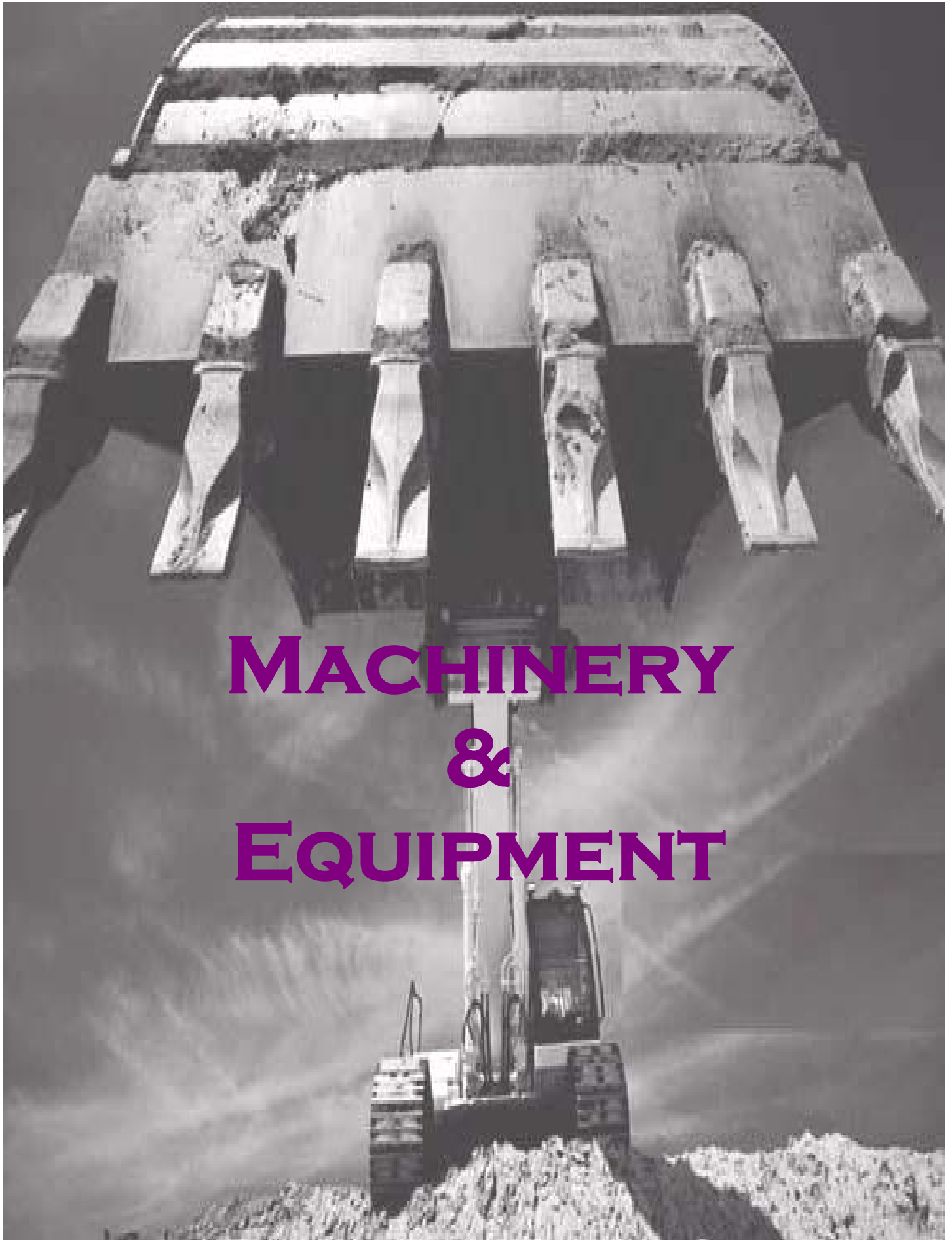
**ORGANIZATION CHART
WORKSITE**

PIPELINE CONSTRUCTION



LIST OF METALEX PERSONNEL BY CATEGORY AND NATIONALITY IN GULF AREA

| CATEGORY | NATIONALITY | | | TOTAL |
|-------------------------------|-------------|--------------------------------|--|------------|
| | TURKISH | INDIAN, PAKISTANI, EGYPTIAN | EUROPEAN, NORTH AMERICAN AND RUSSIAN | |
| MANAGEMENT | 4 | 2 | 4 | 8 |
| ENG & DESIGN | 7 | 9 | 0 | 7 |
| SITE MANAGEMENT | 5 | 2 | 5 | 12 |
| HSE | 2 | 9 | 0 | 11 |
| QA/QC | 3 | 7 | 2 | 12 |
| SITE ADMINISTRATIVE | 6 | 2 | 0 | 8 |
| OPERATORS | 7 | 37 | 0 | 44 |
| WELDERS | 27 | 103 | 0 | 130 |
| OTHER SKILLED SITE STAFF | 21 | 78 | 0 | 99 |
| SEMISKILLED WORKERS AND LABOR | 8 | 285 | 0 | 293 |
| TOTALS | 90 | 534 | 11 | 624 |



MACHINERY & EQUIPMENT

LIST OF MACHINERY & EQUIPMENT owned by



| MAKE | MODEL | MFG. YEAR | SIZE/CAPACITY | SERIAL NR. |
|--|-----------|-----------|---------------|-------------|
| PIPELAYERS / SIDOBOOMS | | | | |
| CATERPILLAR | 578 | 1994 | 305 HP | 8HB00431 |
| CATERPILLAR | 578 | 1994 | 305 HP | 8HB00432 |
| CATERPILLAR | 589 | 1996 | 330 HP | 31Z00379 |
| CATERPILLAR | 589 | 1996 | 330 HP | 31Z00373 |
| CATERPILLAR | 589 | 1996 | 330 HP | 31Z00381 |
| CATERPILLAR | 589 | 1996 | 330 HP | 31Z00376 |
| CATERPILLAR | 594H | 1995 | 370 HP | 96V00282 |
| CATERPILLAR | 594H | 1995 | 370 HP | 96V00316 |
| CATERPILLAR | 594H | 1995 | 370 HP | 96V00768 |
| CATERPILLAR | 594H | 1995 | 370 HP | 96V00550 |
| CATERPILLAR | 594-CPX | 1997 | 370 HP | 62H241 |
| CATERPILLAR | 594G | 1996 | 370 HP | 62H726 |
| CATERPILLAR | 594G | 1996 | 370 HP | 62H234 |
| CATERPILLAR | 594G | 1996 | 370 HP | 62H290 |
| CATERPILLAR | 594H-PL | 1995 | 370 HP | 96V00740 |
| LIEBHERR | RL 42B | 1997 | 234 HP | 3014 |
| LIEBHERR | RL 422 B | 1997 | 132 HP | 3018 |
| PAY WELDERS / WELDING TRACTORS | | | | |
| LIEBHERR | SR 712 B | 1997 | 132 HP | 3024 |
| LIEBHERR | SR 712 B | 1997 | 132 HP | 3021 |
| LIEBHERR | SR 712 B | 1997 | 132 HP | 3034 |
| LIEBHERR | SR 712 B | 1997 | 132 HP | 3025 |
| WELDING GENERATORS / RECTIFIERS | | | | |
| MILLER | BB 500 DX | 2000 | 500 AMP | KK 248 414 |
| MILLER | BB 500 DX | 2000 | 500 AMP | KK 248 415 |
| MILLER | BB 500 DX | 2000 | 500 AMP | LA 021 151 |
| MILLER | BB 500 DX | 2000 | 500 AMP | LA 021 150 |
| LINCOLN ELECTRIC | SAE 400 | 1999 | 400 A | U1980302624 |
| LINCOLN ELECTRIC | SAE 400 | 1999 | 400 A | U1980302622 |
| LINCOLN ELECTRIC | SAE 400 | 1999 | 400 A | U1980302531 |
| LINCOLN ELECTRIC | SAE 400 | 1999 | 400 A | U1980302616 |
| LINCOLN ELECTRIC | SAE 400 | 1999 | 400 A | U1980409010 |
| LINCOLN ELECTRIC | SAE 400 | 1999 | 400 A | U1980302595 |
| LINCOLN ELECTRIC | SAE 400 | 1999 | 400 A | U1980302615 |
| LINCOLN ELECTRIC | SAE 400 | 1999 | 400 A | U1980409012 |
| LINCOLN ELECTRIC | SAE 400 | 1999 | 400 A | U1980302548 |
| LINCOLN ELECTRIC | SAE 400 | 1999 | 400 A | U1980302594 |
| LINCOLN ELECTRIC | SAE 400 | 1999 | 400 A | U1980302586 |
| LINCOLN ELECTRIC | SAE 400 | 1999 | 400 A | U1980302580 |
| LINCOLN ELECTRIC | SAE 400 | 1999 | 400 A | U1980302554 |
| LINCOLN ELECTRIC | SAE 400 | 1999 | 400 A | U1980302618 |
| LINCOLN ELECTRIC | SAE 400 | 1999 | 400 A | U1980408978 |
| LINCOLN ELECTRIC | SAE 400 | 1999 | 400 A | U1980302551 |
| LINCOLN ELECTRIC | SAE 400 | 1999 | 400 A | U1980102995 |
| LINCOLN ELECTRIC | SAE 400 | 1998 | 400 A | U1971009654 |
| LINCOLN ELECTRIC | SAE 400 | 1998 | 400 A | U1971009624 |

LIST OF MACHINERY & EQUIPMENT owned by



| MAKE | MODEL | MFG. YEAR | SIZE/CAPACITY | SERIAL NR. |
|---|-------------|-----------|-----------------|-------------|
| LINCOLN ELECTRIC | SAE 400 | 1998 | 400 A | U1971009612 |
| BENDING MACHINES c/w MANDRELS | | | | |
| BENDING MACHINE 16"-42" | CRC | 1980 | 16"-42" | |
| BENDING MACHINE 32-42" | ÖZKANLAR | 2004 | 32"-42" | |
| BENDING MACHINE 16-30" | MAATS | 1971 | 16"-30" | |
| BENDING MACHINE 4"-24" | GD ENGINEER | 1993 | 4"-24" | |
| BORING MACHINES / AUGERS | | | | |
| BORING MACHINE | ÖYS-1060 | 2004 | 10"-40" | |
| BORING MACHINE | ÖYS-1600 | 2004 | 20"-60" | |
| EXCAVATORS (TRACK TYPE) | | | | |
| HITACHI | EX160 WD | 1993 | 0.7 m3 bucket | 139-1342 |
| FIAT-HITACHI | FH300 | 1992 | 1.2 m3 bucket | 30H0633C |
| FIAT-HITACHI | FH300 | 1992 | 1.2 m3 bucket | 30H0688C |
| FIAT-HITACHI | FH300 LC | 1992 | 1.2 m3 bucket | 30L0120C |
| FIAT-HITACHI | FH300 LC | 1992 | 1.2 m3 bucket | 30L0119C |
| FIAT-HITACHI | FH450.3/31 | 1999 | 1.5 m3 bucket | 454H-0074 |
| KOBELCO | SK200 | 1991 | 0.9 m3 bucket | YN-010341 |
| KOBELCO | SK200 | 1991 | 0.9 m3 bucket | YN-010058 |
| KOBELCO | SK200 | 1992 | 0.9 m3 bucket | YN-010783 |
| LIEBHERR | R 932 HDSL | 2000 | 1.5 m3 bucket | 572-4327 |
| LIEBHERR | R 932 HDSL | 1998 | 1.5 m3 bucket | 572-4179 |
| LIEBHERR | R 932 HDSL | 1997 | 1.5 m3 bucket | 572-4012 |
| LIEBHERR | R 932 HDSL | 2000 | 1.5 m3 bucket | 572-4326 |
| MOTOR GRADERS | | | | |
| KOMATSU | GD 505 | 1982 | 130 HP | 50051 |
| mitsubishi | MG 400 | 1984 | 150 HP | 4G000288 |
| CATERPILLAR | 140 H | 1998 | 140 HP | 6NC03232 |
| BULLDOZERS | | | | |
| CATERPILLAR | D5 | 1979 | 105 HP | 63J17383 |
| CATERPILLAR | D8L | 1986 | 335 HP | 53Y032939 |
| CATERPILLAR | D8L | 1986 | 335 HP | 53Y033408 |
| CATERPILLAR | D8L | 1986 | 335 HP | 53Y033902 |
| CATERPILLAR | D9R | 2000 | 443 HP | 8BL001172 |
| CATERPILLAR | D9R | 2000 | 443 HP | 8BL001394 |
| KOMATSU | D85A-18 | 1985 | 220 HP | 30384 |
| KOMATSU | D85A-18 | 1985 | 220 HP | 31199 |
| ROLLERS / VIBRATING ROLLERS / COMPACTERS | | | | |
| DYNAPAC | CA15 | 1994 | 75 HP | 50051 |
| WIBROMAX | W1801 PD | 1985 | 191 HP | 4G000288 |
| WIBROMAX | W1801 | 1985 | 191 HP | 6NC03232 |
| LOADERS (WHEEL TYPE) | | | | |
| KOMATSU | WA 420 -1 | 1997 | 200 HP / 3,5 M3 | |

LIST OF MACHINERY & EQUIPMENT owned by



| MAKE | MODEL | MFG. YEAR | SIZE/CAPACITY | SERIAL NR. |
|---|-----------------------|-----------|-----------------|---------------------|
| BOBCAT | 751 | 2000 | | |
| CATERPILLAR | 966 D | 1985 | 220 HP / 4M3 | |
| CATERPILLAR | 966 F | 1985 | 220 HP / 4M3 | |
| CATERPILLAR | 950 F | 1985 | 170 HP / 3,1M3 | |
| LOADERS (TRACK TYPE TRACTORS) | | | | |
| CATERPILLAR | 963 | 1985 | 168 HP / 2,4 M3 | |
| CATERPILLAR | 963 | 1985 | 168 HP / 2,4 M3 | |
| CATERPILLAR | 955 | 1981 | 133 HP / 1,8 M3 | |
| MOBILE CRANES | | | | |
| KRUPP | KMK 4060-1 | 1990 | 60T | 090554543WK20454 |
| KRUPP | 40-70 AT | 1994 | 70T | 090554521WK38196 |
| MERCEDES | HIAB | 1994 | 30T | 34300315137796 |
| P&H | OMEGA E 35 | 1995 | 33T | 71856 |
| MOBILE COMPRESSORS | | | | |
| ATLAS COPCO | XA430 Dd | 2001 | 900 CFM | ARP805110 |
| ATLAS COPCO | XA430 | 1985 | 900 CFM | 866589 |
| ATLAS COPCO | XA60 | 1990 | 125 CFM | 45954377 |
| ATLAS COPCO | XAMS355MD EC | 1986 | 740 CFM | YA3-047168-00324943 |
| INGERSOLL-RAND | XP900 | 2001 | 900 CFM | 410108E84577 |
| GENERATOR SETS | | | | |
| 7,5 Kva WFMP70MTRE | AKSA | 2001 | 7,5 KVA | |
| 8 Kva WFMP70MTRE | AKSA | 1992 | 8 KVA | |
| 8 Kva WFMP70MTRE | AKSA | 1992 | 8 KVA | |
| 10 KVA JENERATOR | HONDA | 1995 | 10 KVA | |
| 30 KVA JENERATOR | PERKINS | 1997 | 30 KVA | |
| 10 KVA JENERATOR | AKSA | 1995 | 10 KVA | |
| 250 KVA JENERATOR | ÇUKUROVA | 1998 | 250 KVA | |
| 149 KVA JENERATOR | ÇUKUROVA | 1995 | 149 KVA | |
| VEHICLES (PICKUPS, VANS & AUTOMOBILES) | | | | |
| NISSAN | PATHFINDER 3.3 SE 4x4 | 2000 | 170 HP | JN1BAR07YXYW398546 |
| NISSAN | SKYSTAR 4x2 | 2002 | 133 HP | JN1CCPGD22U0040263 |
| NISSAN | COUNTRY 4x4 | 2003 | 133 HP | JN1CPUD22U0077806 |
| NISSAN | COUNTRY 4x4 | 2003 | 133 HP | JN1CPUD22U0078381 |
| NISSAN | COUNTRY 4x4 | 2003 | 133 HP | JN1CPUD22U0078602 |
| NISSAN | COUNTRY 4x4 | 2003 | 133 HP | JN1CPUD22U0077957 |



List of Machinery & Equipment Owned by Metalex

| BRAND NAME | MODEL | SERIAL NO | DATE of MANUFACTURE | LICENSE PLATE NO | CAPACITY | ENGINE | | | |
|----------------------------------|------------|--------------------|---------------------|------------------|------------------|---------|---------|----------------|-------------|
| | | | | | | MAKE | MODEL | SERIAL NO | RATED POWER |
| DIESEL WELDING GENERATORS | | | | | | | | | |
| VIETZ | GDV 400 U | CC-D004-1681 | 2003 | | 400 Amps. | DEUTZ | F3L912 | | 27.5 kW |
| VIETZ | GDV 400 U | CC-D004-1613 | 2003 | | 400 Amps. | DEUTZ | F3L912 | | 27.5 kW |
| VIETZ | GDV 400 U | CC-D004-1574 | 2003 | | 400 Amps. | DEUTZ | F3L912 | | 27.5 kW |
| VIETZ | GDV 400 U | CC-D004-1566 | 2003 | | 400 Amps. | DEUTZ | F3L912 | | 27.5 kW |
| VIETZ | GDV 400 U | CC-D004-1599 | 2003 | | 400 Amps. | DEUTZ | F3L912 | | 27.5 kW |
| VIETZ | GDV 400 U | CC-D004-1603 | 2003 | | 400 Amps. | DEUTZ | F3L912 | | 27.5 kW |
| VIETZ | GDV 400 U | CC-D004-1680 | 2003 | | 400 Amps. | DEUTZ | F3L912 | | 27.5 kW |
| VIETZ | GDV 400 U | CC-D004-1573 | 2003 | | 400 Amps. | DEUTZ | F3L912 | | 27.5 kW |
| HIAB CRANES | | | | | | | | | |
| HIAB MOUNTED ON 6x6 MAN TRUCK | KARDELEN | | 2003 | 06 UL 634 | 35 TONNES | | | | |
| AUTOMOBILE | | | | | | | | | |
| HYUNDAI ACCENT 1.3 LX | ACCENT 1.3 | NLHCG41FP1Z011116 | 2000 | 34 AS 7663 | 4 PERSON | | | G4AY843598 | 85 HP |
| SW AUTOMOBILES | | | | | | | | | |
| RENAULT 12.TSW | 12 TSW | VF1K17905TR314599 | 1995 | 06 V 0724 | 4 PERSON | RENAULT | CIJ-791 | CIJ-791R337810 | 72 HP |
| RENAULT 12.TSW | 12 TSW | VF1K17905TR529607 | 1998 | 06 ZTC 38 | 4 PERSON | RENAULT | CIJ-791 | CIJ-791R386996 | 72 HP |
| 4 WD VEHICLES | | | | | | | | | |
| NISSAN PATHFINDER 4X4 | PATHFINDER | JNBAR07YXYW398546 | 2000 | 06 JS 848 | 4 PERSON | NISSAN | | VG33323029 | 170 HP |
| VANS | | | | | | | | | |
| RENAULT KANGO 1.9 D RN | KANGO 1.9 | VF1FCOEBF23469038 | 2001 | 06 KOB 58 | 5 PERSON | RENAULT | | F8QC547481 | 65 HP |
| PICK-UP'S | | | | | | | | | |
| SKYSTAR D22 4X4 | SKYSTAR | JN1CCPGD22U0040263 | 2002 | 06 VJG 72 | 5 PERSON/1145 KG | NISSAN | | YD25065033A | 133 HP |
| COUNTRY 4X4 | COUNTRY | JN1CPUD22U0077806 | 2003 | 06 AB 3867 | 5 PERSON/680 KG | NISSAN | | YD25060284A | 133 HP |
| COUNTRY D/C 4X4 A/C | COUNTRY | JN1CPUD22U0078381 | 2003 | 06 AB 6447 | 5 PERSON/680 KG | NISSAN | | YD25062085A | 133 HP |
| COUNTRY D/C 4X4 A/C | COUNTRY | JN1CPUD22U0078602 | 2003 | 06 AB 6448 | 5 PERSON/680 KG | NISSAN | | YD25062948A | 133 HP |
| COUNTRY D/C 4X4 A/C | COUNTRY | JN1CPUD22U0077957 | 2003 | 06 AB 6449 | 5 PERSON/680 KG | NISSAN | | YD25059847A | 133 HP |



 **metalex**
Construction Industry Trading



METALEX International Construction Group Inc.
Address : Ahmet Mithat Efendi Sokak No:33/6